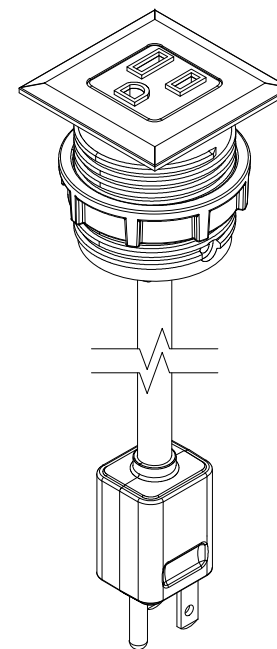
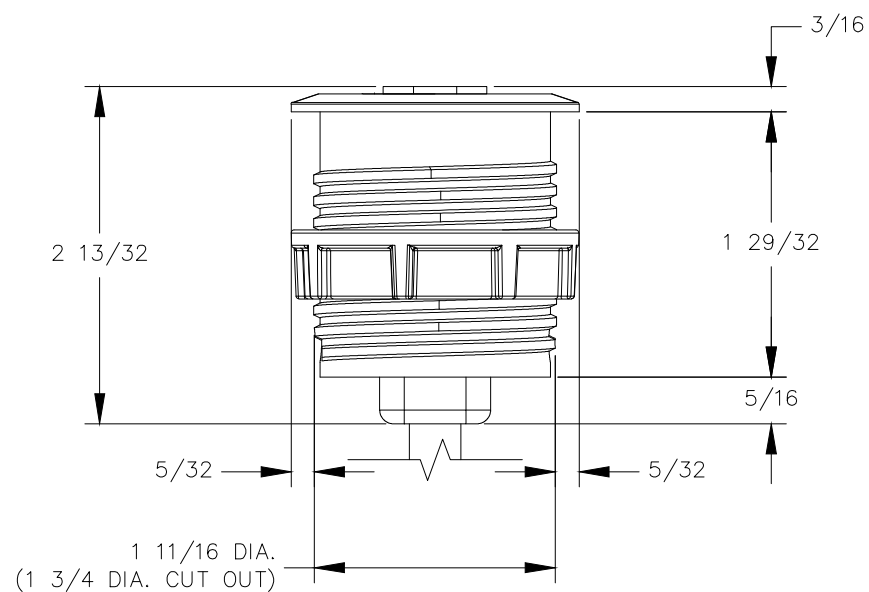


TOP VIEW



NOTE:

1. 6 ft. cord length.
2. Table thickness is  $\frac{5}{16}$  MIN. to  $1 \frac{7}{16}$  MAX.
3. Plug dimension is  $1 \frac{11}{32} \times 1 \frac{1}{32} \times \frac{7}{8}$ .



FRONT VIEW