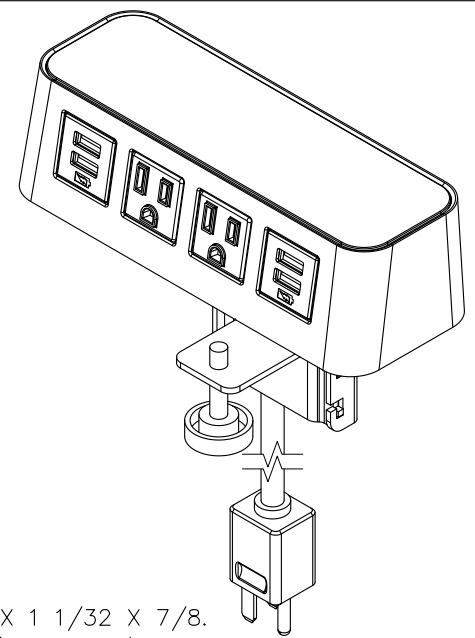
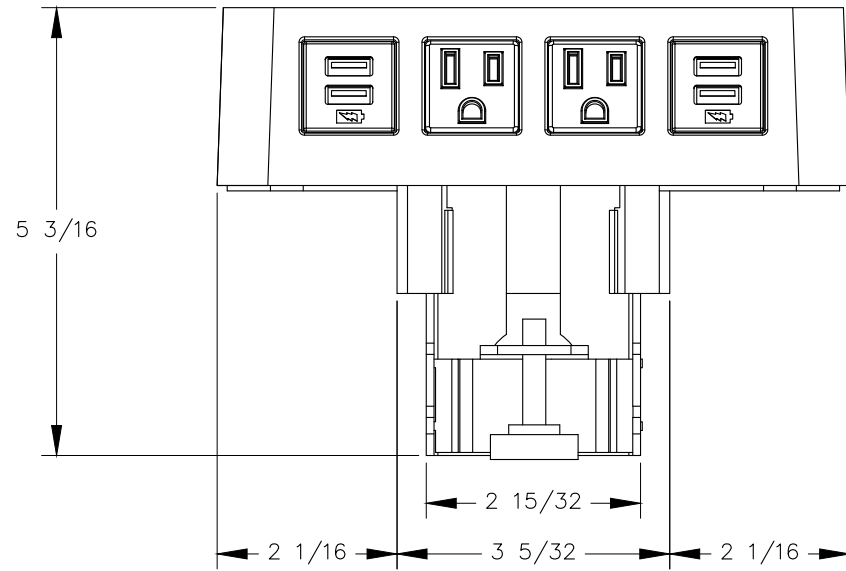


TOP VIEW

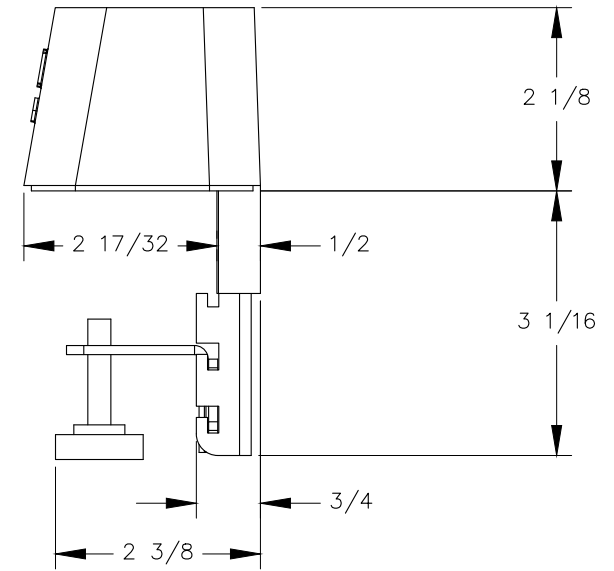


NOTE:

1. 6 ft. cord length.
2. Plug dimension is 1 11/32 X 1 1/32 X 7/8.
3. USB-A ports are for charging use only.
4. Table thickness is 1/2 MIN. to 1 3/4 MAX. for top bracket orientation.
5. Table thickness is 1 1/4 MIN. to 2 3/4 MAX. for bottom bracket orientation.



FRONT VIEW



RIGHT VIEW