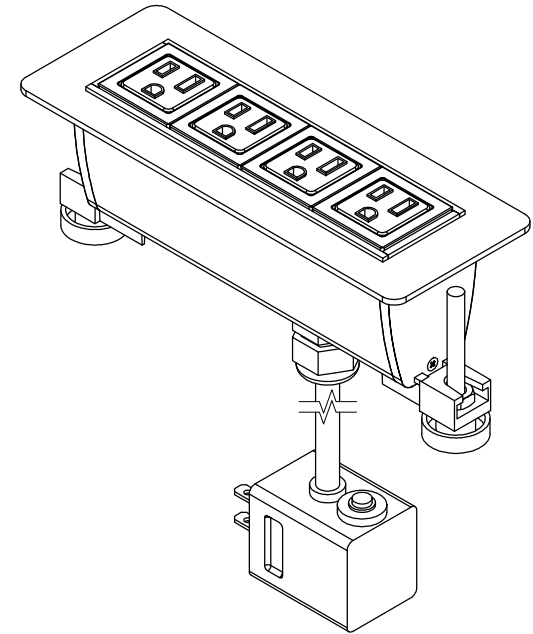
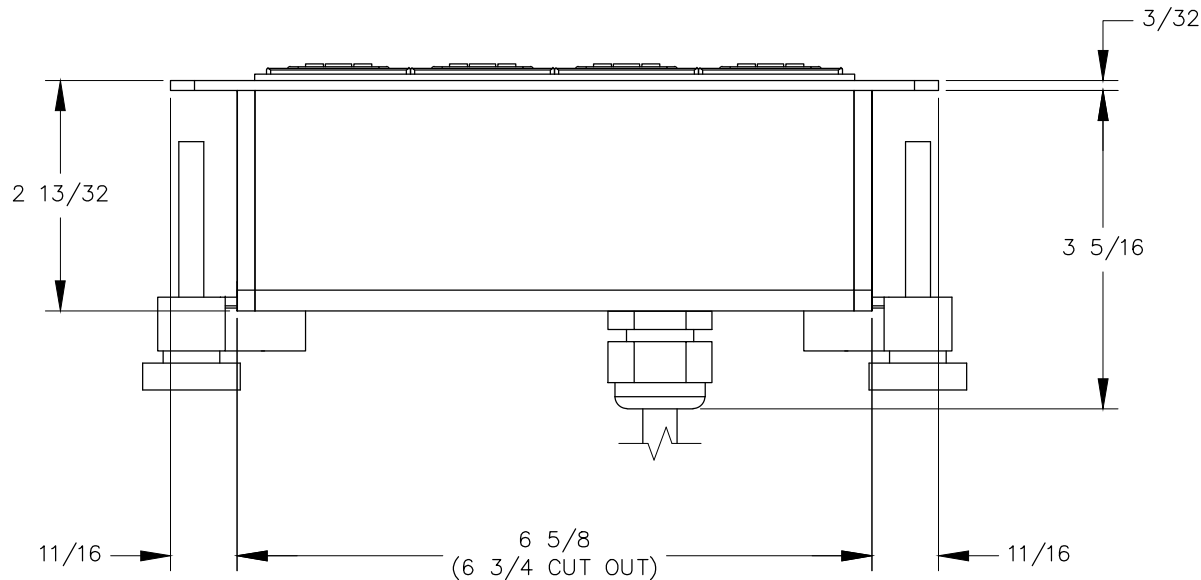


TOP VIEW

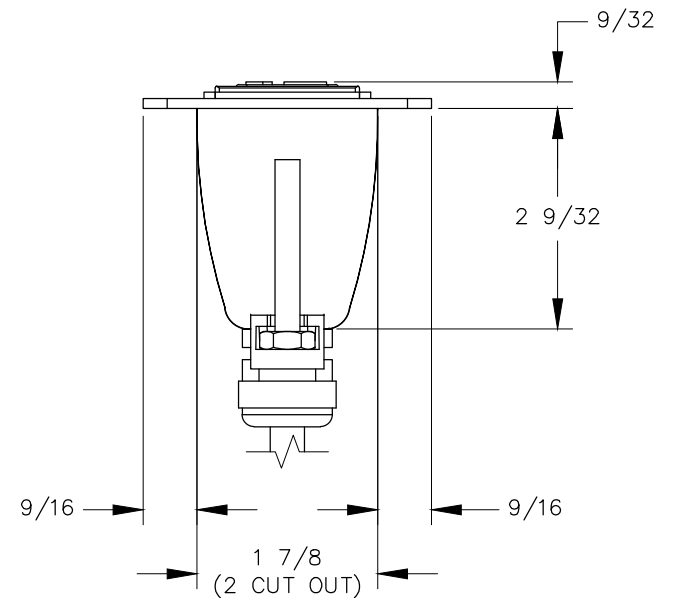


NOTE:

1. 6 ft. cord length.
2. Table thickness is $\frac{3}{4}$ MIN. to $1 \frac{3}{4}$ MAX.
3. Circuit breaker plug is $1 \frac{15}{32} \times 1 \frac{21}{32} \times 2 \frac{1}{16}$.



FRONT VIEW



RIGHT VIEW