

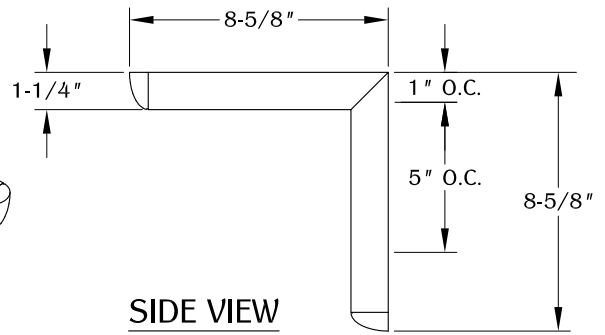
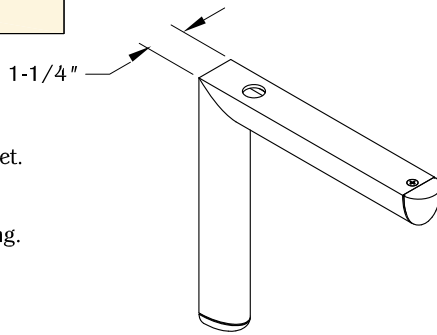
PART #

SWS7A

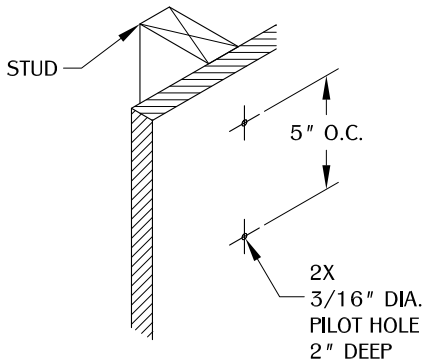
310.318.2491 • 800.523.1269 • www.mockett.com

NOTE:

- Weight capacity is 125 lbs. per bracket.
- Shelf projection is 12" MAX.
- Bracket spacing is 32" MAX.
- Must be installed into studs or blocking.

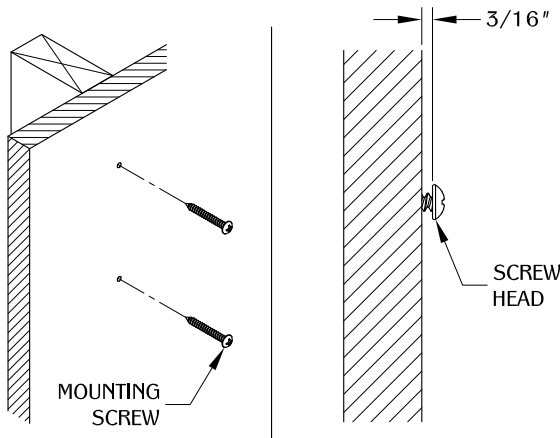


1a Shelf installation



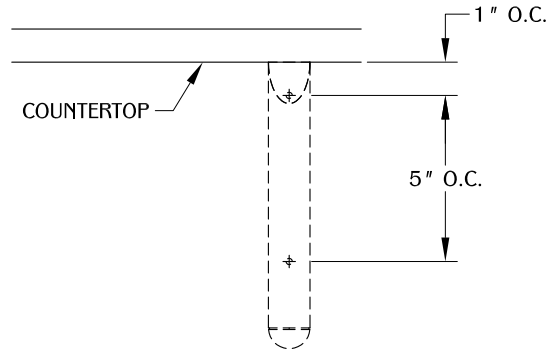
Determine the position and location of the part on the work surface. Must be installed into studs or blocking. Mark the mounting positions and drill pilot holes for the mounting hardware.

2



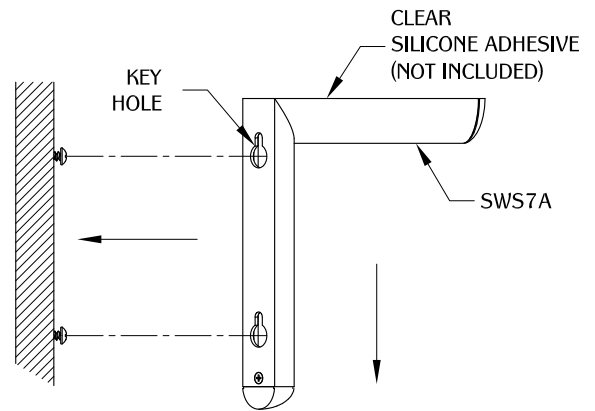
Install the (2) mounting screws. Make sure to have at least 3/16" gap from the work surface and screw head. (Note: The gap may be adjusted to 1/8" for a tight fit.)

1b Countertop installation



Determine the position and location of the part on the work surface. Must be installed into studs or blocking. Mark the mounting positions and drill pilot holes for the mounting hardware. Use 1" on center from the bottom of the countertop. The part must be installed before countertop installation.

3



Install the SWS7A bracket by aligning the key holes to the screw head. Push down until screws are secured in place, check if bracket is secured and adjust screw depth if necessary. For added security, we recommend a clear horizontal adhesive strip.

TABLE OF CONTENTS:



..... 1X SWS7A



..... 2X 2" No. 14 Pan head Wood screw