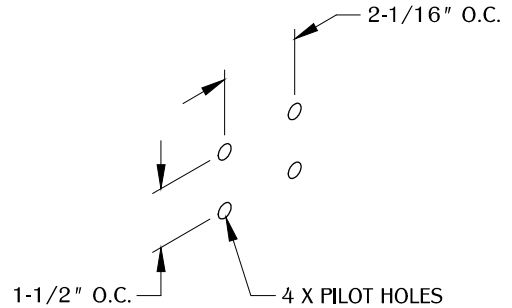


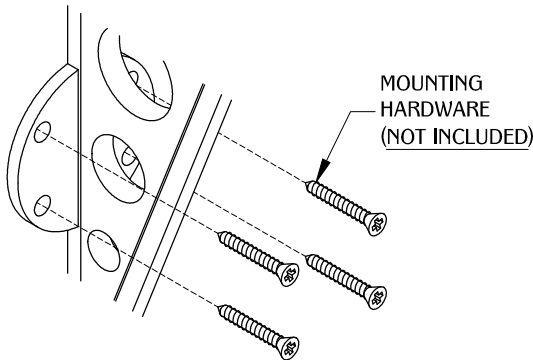
1



Note: Recommended to mount into wall studs.

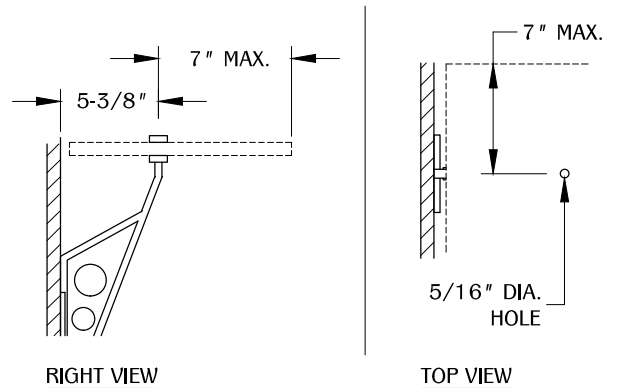
Determine the position and location of the part in the work surface. Mark the mounting positions and drill the pilot holes for the mounting hardware. (Note: Mounting hardware not included.)

2



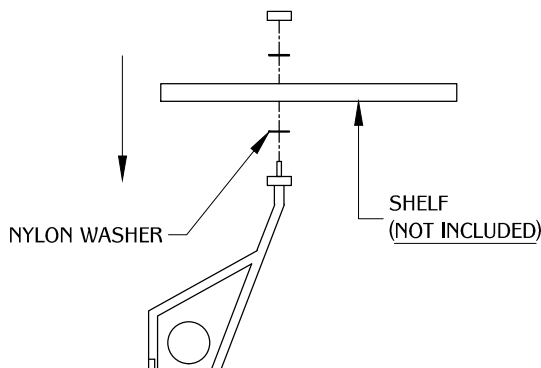
Make sure the part is leveled and aligned straight. Then, install the part with the mounting hardware(s). Repeat Step #1 for the second shelf support. (Note: Maximum bracket spacing is 30" O.C.)

3



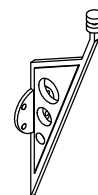
Determine the side and front over hang projection for the shelf. Then, drill the on center mounting hole on the shelf. Shelf width not to exceed 12-3/8" or a maximum of 7" overhang from the mounting post.

4



Remove the mounting cap. Use two nylon washer to protect shelf material. Align the shelf with the mounting holes and secure with mounting cap.

TABLE OF CONTENTS:



.....1 X SH25-94



.....2 X NYLON WASHER