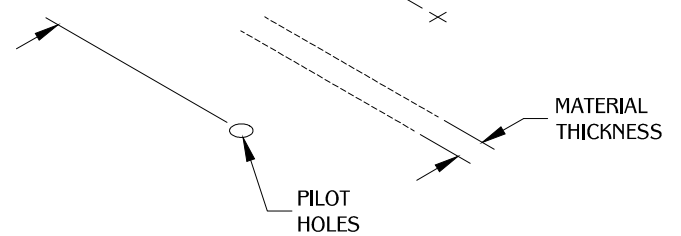


1

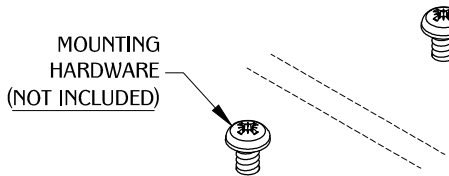
MATERIAL THICKNESS
(1-1/4" to 1-1/2")

= O.C.



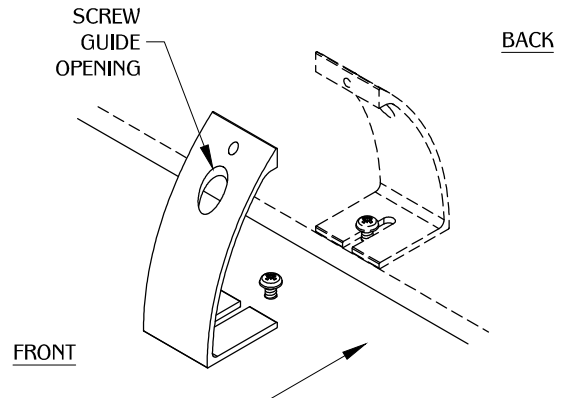
Determine the position and location of the part in the work surface. Mark the mounting positions and drill the pilot holes for the mounting hardware. (Note: Mounting hardware not included.)

2



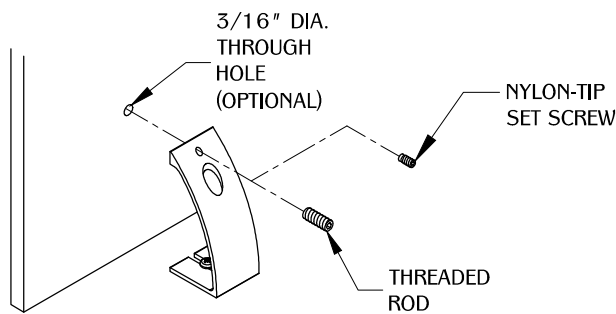
Insert the screws into the pilot holes enough to slide the part into place.

3



Position the part over the screwdriver opening. Place the panel material. Tighten the mounting screws to secure the part on both sides.

4



Secure the panel by installing the nylon-tip set screw or the threaded rod depending on the thickness of your panel. Note: Max panel height = 18".

TABLE OF CONTENTS:



.....2 X PGRP4B



.....2 X NYLON-TIP 6-32 SET SCREW



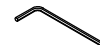
.....1 X 1/2" 6-32 SET SCREW



.....1 X 3/4" 6-32 SET SCREW



.....1 X 7/8" 6-32 SET SCREW



.....1 X Hex Key