



USB plugs for
CHARGING USE ONLY.

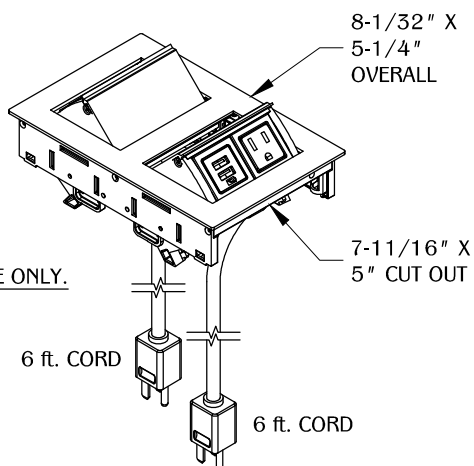
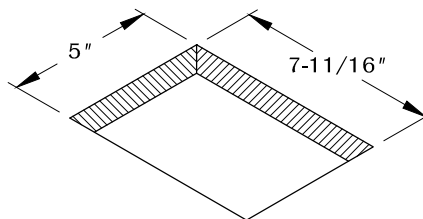


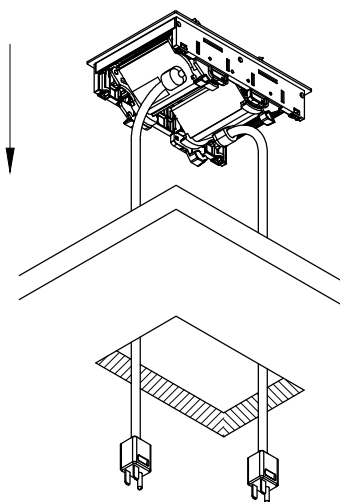
TABLE THICKNESS = 3/4" MIN. to 1-11/16" MAX.

1



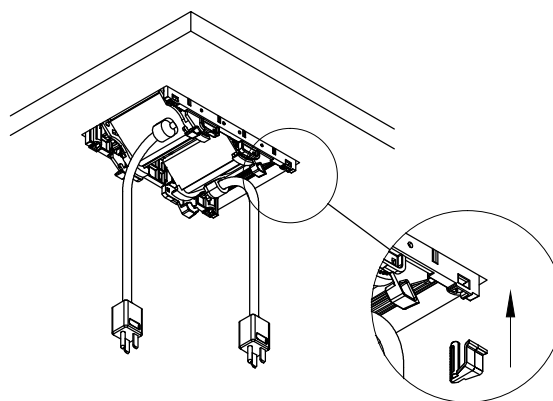
Determine the position and location of the unit on the work surface. Cut the hole at 5" X 7-11/16".

2



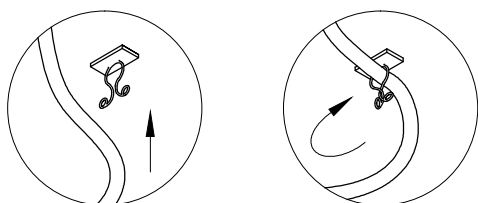
Guide the cord into the cut out. Make sure the unit is fully leveled on the work surface.

3



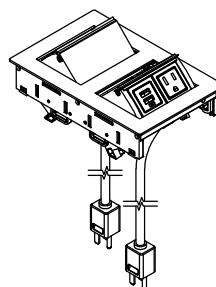
Use (4) wing clamps to secure the unit.

5



Optional wire manager.

TABLE OF CONTENTS:



..... 1 X PCS82/2A/U1
(2 POWER &
2 DUAL USB)



..... 2 X WIRE MANAGER



..... 4 X WING CLAMP