

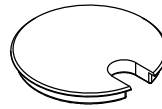
## MM5

PROPRIETARY AND CONFIDENTIAL.  
ALL DIMENSIONS HAVE A +/- 1/32" TOLERANCE UNLESS OTHERWISE SPECIFIED. WE DO NOT RECOMMEND DRILLING OR CUTTING ANY HOLES BEFORE RECEIVING A PRODUCT OR A PRODUCT SAMPLE.

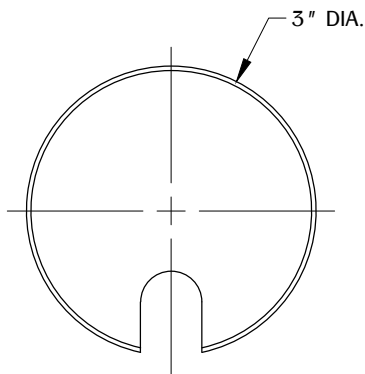
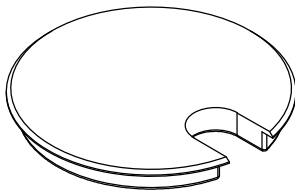
### SPECIFICATIONS

- Maximum cord diameter is 5/8".

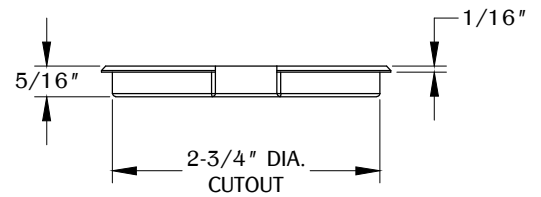
### TABLE OF CONTENTS



..... 1X MM5

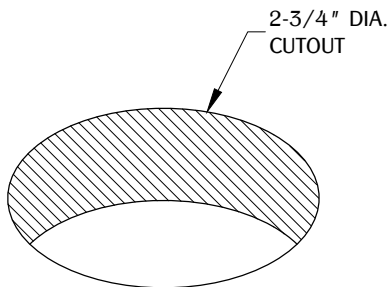


TOP VIEW



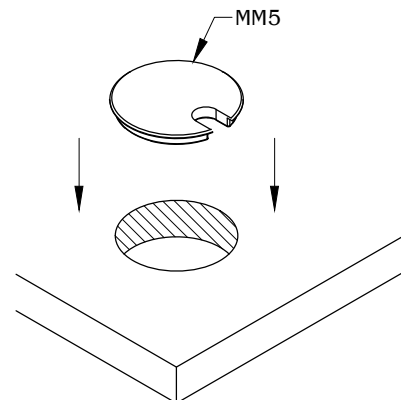
FRONT VIEW

1



Make a cutout in the desired location on your work surface.  
Allow enough clearance for part function.

2



Install the MM5 into the cutout and make sure it is fully leveled onto the work surface.