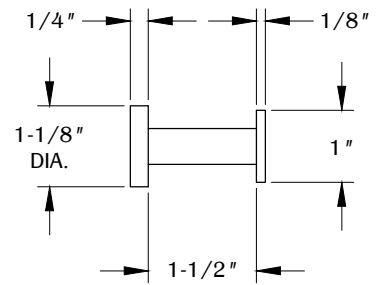
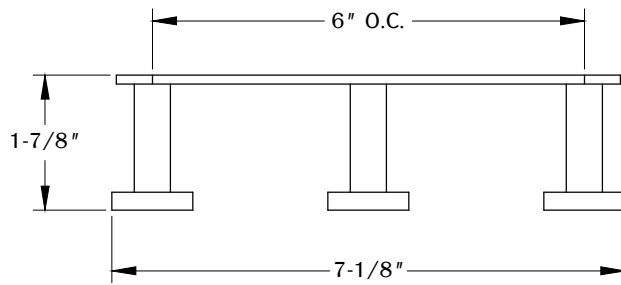
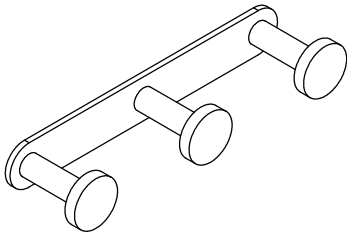


PART #

HK27K-A

310.318.2491 • 800.523.1269 • www.mockett.com



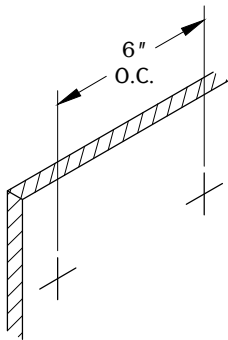
NOTE:

- Weight capacity is 20 lbs.
- Extra hardware provided not necessary for installation.

TOP VIEW

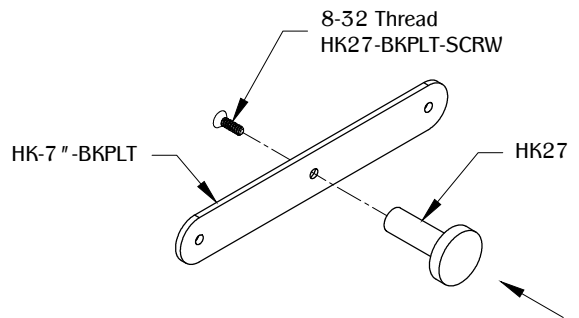
RIGHT VIEW

1



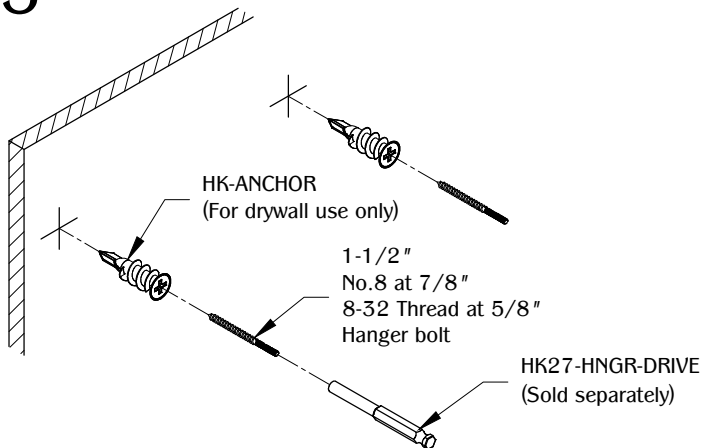
Determine the position and location of the part on the work surface. Mark the mounting position for the mounting hardware.

2



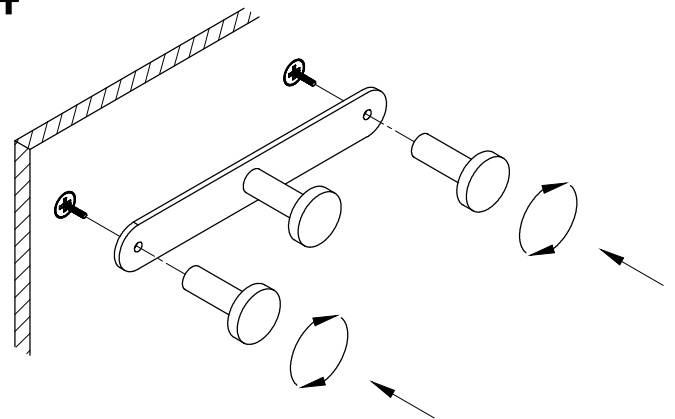
Assemble the HK27 on the center of the HK-7\"/>

3



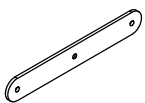
Install the 1-1/2\"/>

4



Install the assembled HK-7\"/>

TABLE OF CONTENTS:



..... 1X HK-7\"/>



..... 1X 1/4\"/>



..... 1X HK27-HNGR-DRIVE
(Sold separately)



..... 3X HK27



..... 3X HK-ANCHOR



..... 3X 1-1/2\"/>