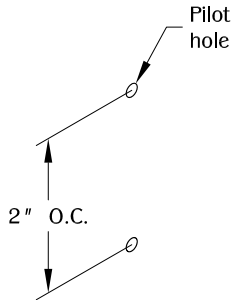
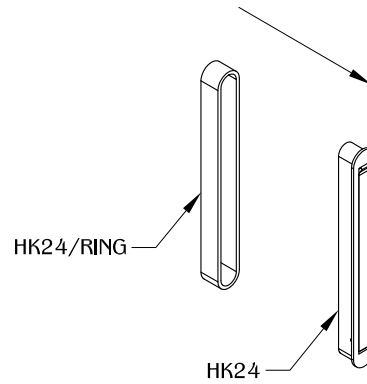


1



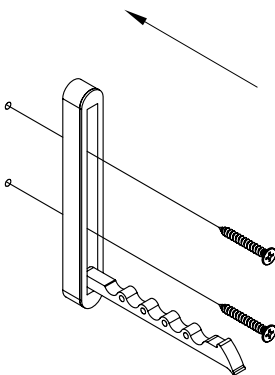
Make (2) pilot holes in the desired work surface.
(NOTE: Must be installed into studs.)

2



Install the HK24/RING to the back of the HK24.

3



Secure the part using (2) wood screws and align the HK24 to the pilot holes.

NOTE:

- HK24 weight capacity is 20 lbs.

TABLE OF CONTENTS:



..... 1 X HK24/RING



..... 1 X HK24



..... 2 X 1-1/2"
Wood screws