

These instructions will allow you to mount CPU9 vertically.

(NOTE: CPU9 CPU Holder are shipped out unassembled. An assembled CPU holder will be an extra charge.)

(SEE STEP 1) To adjust, assemble or unassemble the CPU Holder

(SKIP to PAGE 2) For an assembled CPU Holder and installation of the Top Plate

FIGURE 1

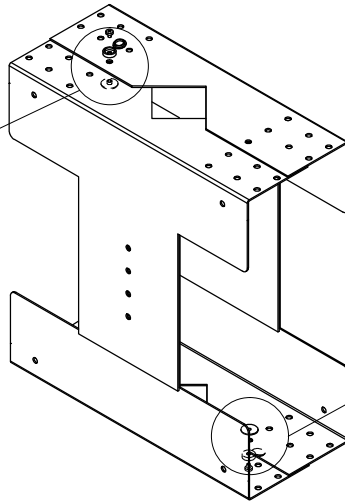
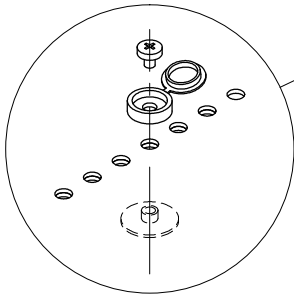
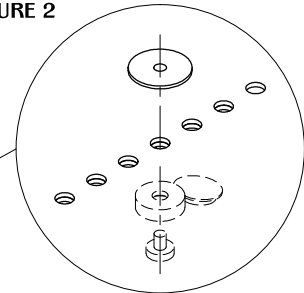


FIGURE 2



**STEP 1:** Measure the dimensions of your CPU and write them down. (Height and Width)

**STEP 2:** Assemble the short sides of any two L-shaped pieces. Apply your width dimension to snugly fit the CPU. Fasten the L-shaped pieces by using two sets of provided hardware shown in 'Figure 1' for the top or 'Figure 2' for the bottom of the CPU Holder. (NOTE: Put screw cap in place BEFORE inserting screw.)

**STEP 3:** Repeat 'STEP 2' to assemble the other two L-shaped pieces.

**STEP 4:** Join the two assembled sections together by applying your length dimension to fit the CPU. Fasten the sections by using the two sets of provided hardware shown in 'Figure 3' for the left or 'Figure 4' for the right of the CPU Holder on each side. Snap all screw caps shut.

**NOTE:**

- 1.) Unit has a  
3" MIN.  
5" MAX. width and  
10" MIN.  
16" MAX. height.
- 2.) Unit weighs 3.5 lbs.
- 3.) Recommended weight capacity 15 lbs.

FIGURE 3

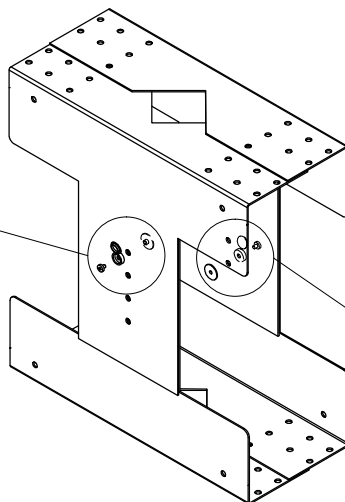
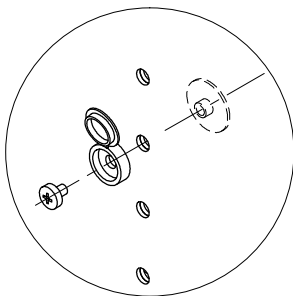
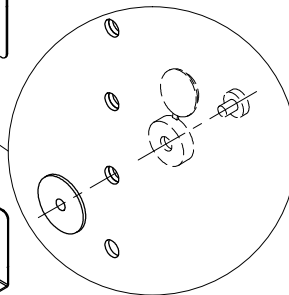
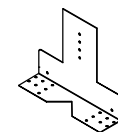


FIGURE 4

**TABLE OF CONTENTS:**

.....4 X L-shaped Piece



.....8 X Screw



.....8 X Barrel Nut



.....8 X Screw Cap