

Assembly Instructions for CPU holder.

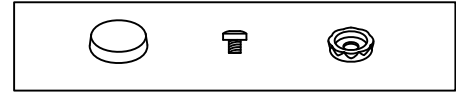
## READ THIS FIRST!

For CPU-4A

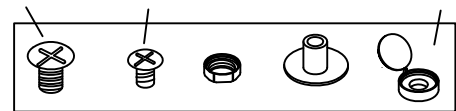
These Instructions will allow you to mount CPU-4a, Vertically. Part comes pre-assemble all you need to do is install the top plate.

(SEE STEP 5) For un-assemble or adjustment, SEE STEP 1.

FOR MET. SILVIER



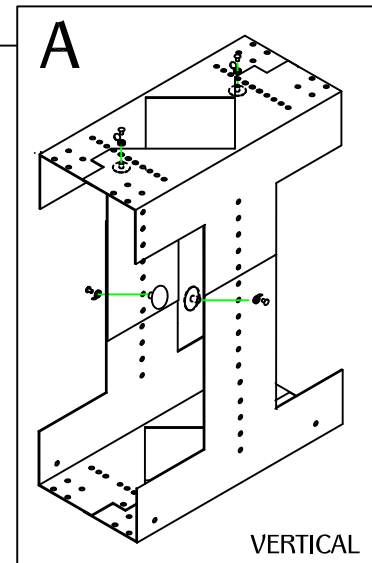
SCREW NUT SET BARREL NUT SCREW CAPS



## CPU-4A

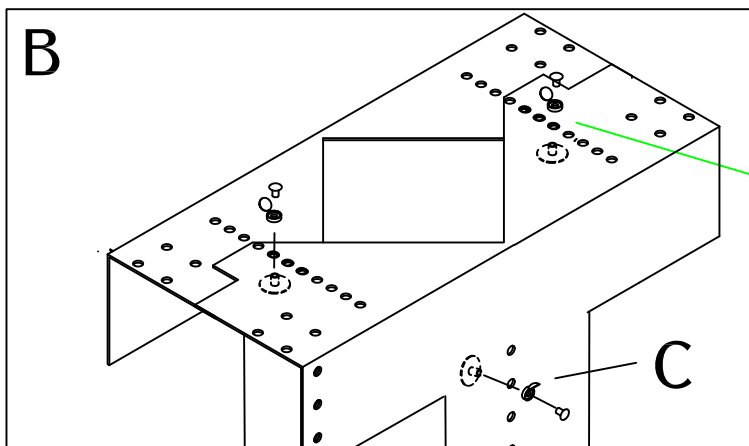
Enclosed kit consist of four equal size L-shaped pieces and 8 screws, barrel nuts and nut sets and 8 screw caps Drawing "A"

- STEP 1: For un-assemble or adjustment, measure dimensions of CPU and write them down.
- STEP 2: Assemble short sides of any two pieces, measuring inside dimensions of opening needed to snugly fit CPU. Fasten using screws as shown. Put screw cap in place BEFORE inserting screw. Drawing "B"
- STEP 3: Assemble other two pieces as above.
- STEP 4: Join two sections together with adequate room to snugly fit CPU on all four sides. Use two screw sets and two screw cap sets on each long side. Drawing "C". Measure clearances again before tightening all screws to make sure CPU will fit snugly. Snap all screws caps shut and install self-tapping screws.



NOTE:

- 1.) Adjust 5-1/2" to 9-3/8" wide and 14" to 24" high
- 2.) Unit weighs 17 pounds



- STEP 5: Switch the two top screws from the CPU4A holder, once you made sure that your CPU fits inside the unit. Drawing "D"
- STEP 6: Install swivel top plate to unit with four screws and nuts on each corner. Drawing "E"
- STEP 7: Unit is ready to install underneath your table top. Measure how thick is your table top and install wood screws 1/4" shorter than the thickness of the table top. Make sure to install wood screws that are at the least 3/16" thick.

NOTE: Wood screws not included. (quantity needed = 6 screws). Drawing "F"  
CPU4A Holders are shipped out unassembled. An assembled CPU4A holder will be an extra charge.

