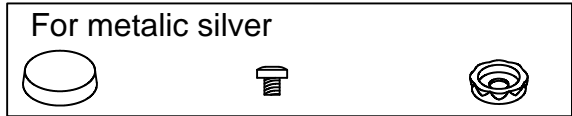
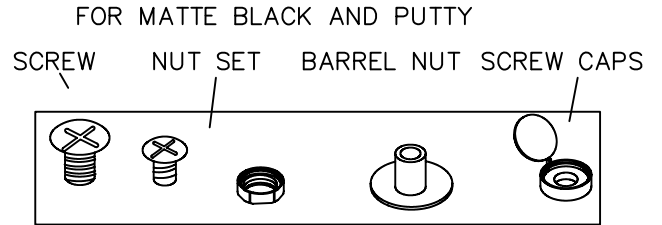


READ THIS FIRST!

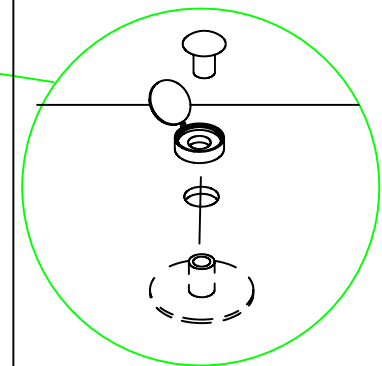
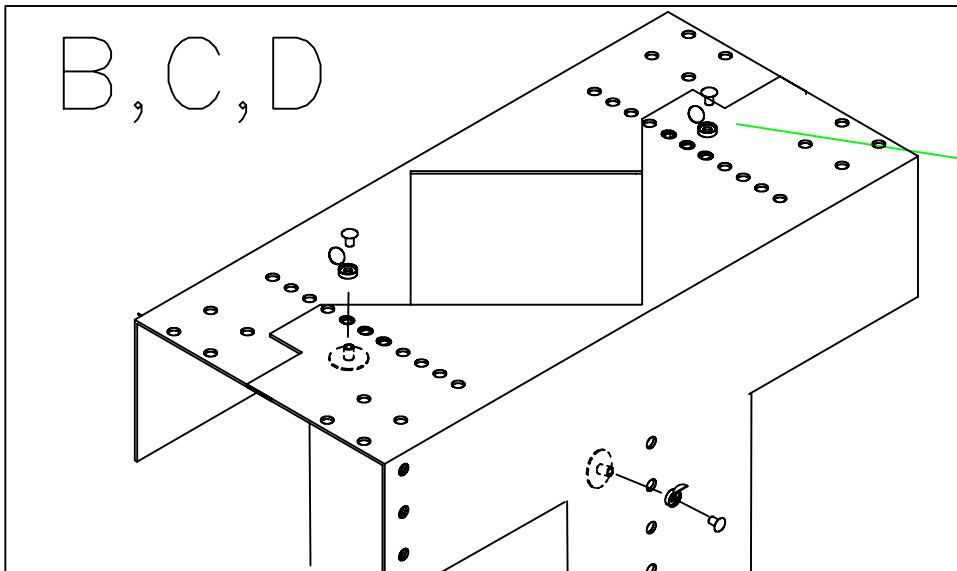
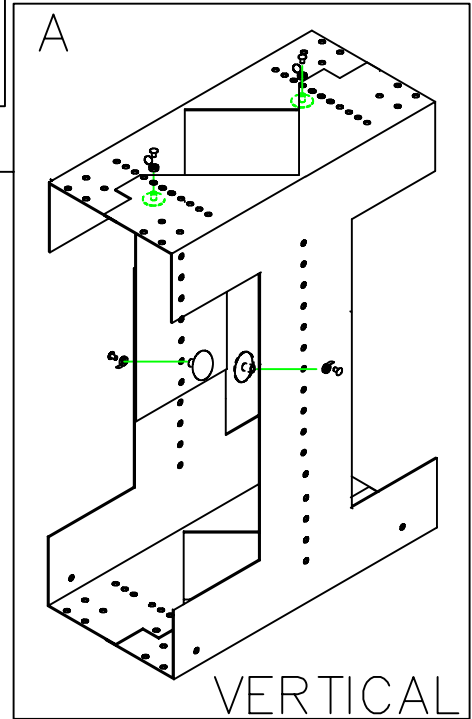
For CPU-3A
These instructions assume you will mount CPU vertically. If you are going to do so horizontally, just turn unit over on its side and follow along.



CPU3A

Enclosed kit consists of four equal size L-shaped pieces and 8 screw, barrel nut and nut sets and 8 screw caps Drawing "A"

- STEP 1: Measure dimensions of CPU and write them down
- STEP 2: Assemble short sides of any two pieces, measuring inside dimensions of opening needed to snugly fit CPU. Fasten using screws as shown. Put screw cap in place BEFORE inserting screw. Drawing "B"
- STEP 3: Assemble other two pieces as above.
- STEP 4: Join two sections together with adequate room to snugly fit CPU on all four sides. Use two screw sets and two screw cap sets on each long side. Drawing "C". Measure clearances again before tightening all screws to make sure CPU will fit snugly. Snap all screw caps shut.



CPU3A

corner. Notes screws should come down from inside CPU Holder, nuts and washers should fasten on bottom. Drawing "E"

