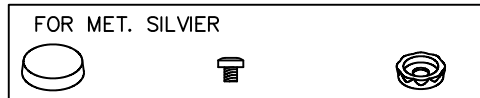


Assembly Instructions for CPU holder

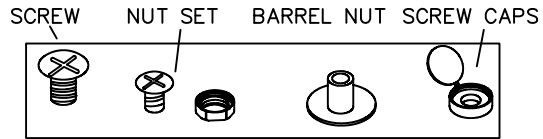
READ THIS FIRST!

For CPU-2A

These instructions will allow you to mount CPU2A, vertically or horizontally. All you will have to do is turn unit over on its side and follow along because unit is all the same.



FOR MATTE BLACK AND PUTTY



CPU-2A

Enclosed kit consists of four equal size L-shaped pieces and 8 screw, barrel nut and nut sets and 8 screw caps Drawing "A"

STEP 1:

Measure dimensions of CPU and write them down.

STEP 2:

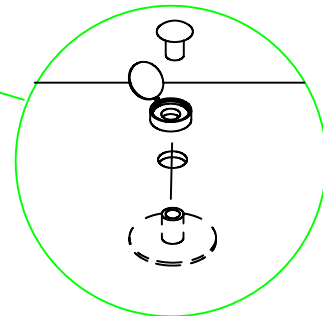
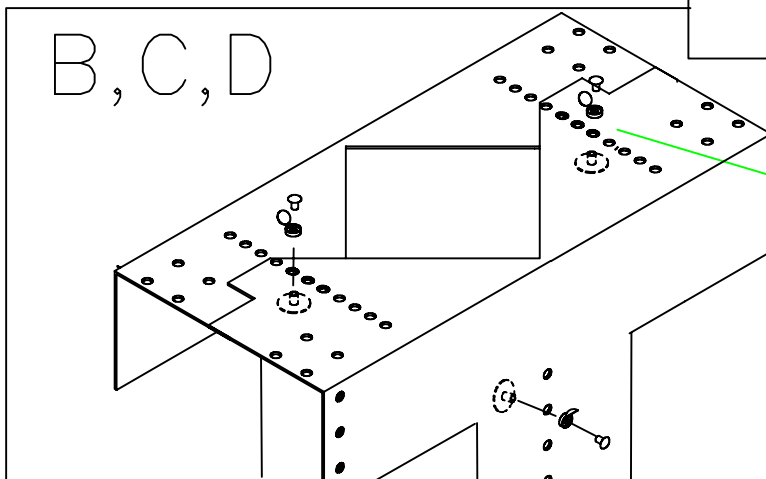
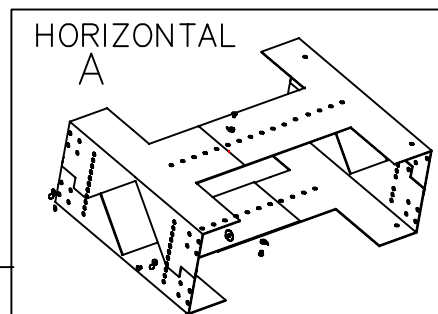
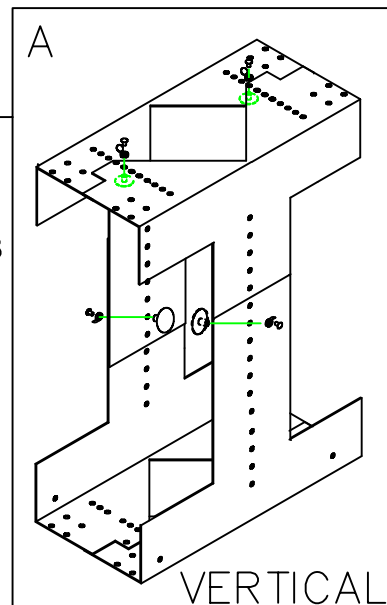
Assemble short sides of any two pieces, measuring inside dimensions of opening needed to snugly fit CPU. Fasten using screws as shown. Put screw cap in place BEFORE inserting screw. Drawing "B"

STEP 3:

Assemble other two pieces as above.

STEP 4:

Join two sections together with adequate room to snugly fit CPU on all four sides. Use two screw sets and two screw cap sets on each long side. Drawing "C". Measure clearances again before tightening all screws to make sure CPU will fit snugly. Snap all screw caps shut.



CPU-2A

- STEP 5: Install tabs into slides use self-tapping screws, "two L-tabs per side". These are the tabs which will eventually screw unit underneath your desk. Make sure tabs face outwards, you can adjust tabs height to suit CPU holder. Drawing "E"
- STEP 6: Pull slides apart by pressing release, use caution because it dents easily and may require a tug. Drawing "F"
- STEP 7: Screw part that has no tabs to CPU Holder, one nut and bolt front and rear of unit. Make sure you have slides on proper side of CPU Holder. Install both screws into place at the same time to allow balance. Slide other slide into place, so both slides move back and forth in the same direction. It's easy to mount the slides incorrectly, so that they slide in opposite directions. Drawing "G"
- STEP 8: Repeat step 5-7 on the other side, make sure tabs faces up and out.
- STEP 9: Screw CPU Holder under desk through top L-tabs holes. Drawing "H"

