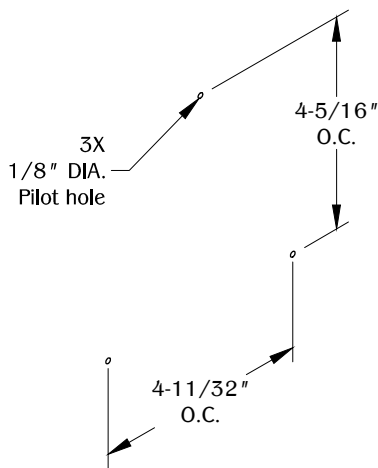


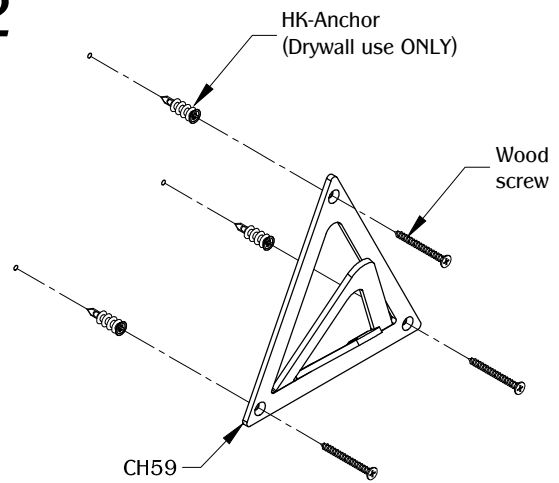
RIGHT VIEW

1



Determine the position and location of the part in the work surface. Mark the mounting positions and drill the pilot holes for the mounting hardware.

2

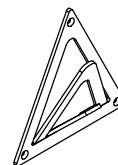


Use (3) wood screws to secure the part in to the work surface. Make sure the part is fully level on the work surface.

NOTE:

- Weight capacity is 40 lbs. with drywall anchor.
- All dimensions have a (+/-) 1/16" tolerance. We do not recommend drilling or cutting any holes before receiving a product or a product sample.

TABLE OF CONTENTS:



.....1X CH59



.....3X HK-Anchor



.....3X 1-1/2"
No. 6 Wood screws