

O
F
F
I
C
E

H
O
S
P
I
T
A
L
I
T
Y

H
O
M
E

H
E
A
L
T
H
C
A
R
E

Details: By Design



MOCKETT

DOUG MOCKETT & COMPANY, INC

40⁺ years

OF MOCKETT INNOVATION

Dear Friends –

When you've been in business for over 40 years, you can expect to see some changes. And we've seen plenty. But nothing could have prepared us for the unprecedented times we are experiencing now. The things they don't teach you at Harvard Business School. But, like everything else, you adapt. Or get left behind.

So we've taken a careful look at our collection and added new parts to fit with the current design landscape. Interesting that in recent years, we already started seeing a blend of different environments and different markets – design elements with crossover appeal for home, office, and hospitality were blurring the lines of

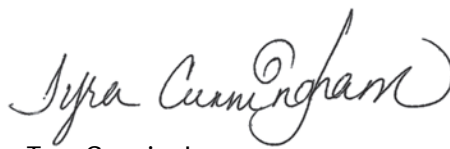
work and leisure to create comfortable spaces all around us.

Fitting that with the emergence of work from home and new work and travel accommodations, we can now expand on these concepts to make all areas of our surroundings more functional. And more fabulous!

Enjoy our newest offerings.



Douglas A.J. Mockett
CEO



Tyra Cunningham
President



04 OFFICE



16 HOSPITALITY



28 HOME



40 HEALTHCARE

Times They Are-a-Changing.

Change is the only constant in our world, and we are adapting our approach to design to be ahead of the marketplace and provide you with the tools you need, whatever or wherever that may be.

Our collection cannot be defined by any single use function, but rather by its versatility in serving many different markets and by being used universally throughout. Let us show you how.



UCS3 – Mini Under Desk USB Charger



PSCR9 – Skylight Privacy Screen



PCS115 – Power Interface – Under Desk Mount



PCS109 – Ivory Tower Pull-Up Power & USB Charging



NON SEQUITUR © 2021 Wiley Ink, Inc.. Dist. By ANDREWS MCMEEL SYNDICATION. Reprinted with permission. All rights reserved.



WM41B – Vertical Under Desk Wire Manager

Office

Increased emphasis on dedicated individual spaces with fully functional setups means users are free to customize their own work area.

There is no one-size-fits-all approach to design here. Pick and choose from our assortment of hardware pieces to add convenience and function to your furniture. Optimize your work space and see what a difference these simple additions can make!



ABG3 – 3-½" Aluminum Desk Grommet Set with Brush

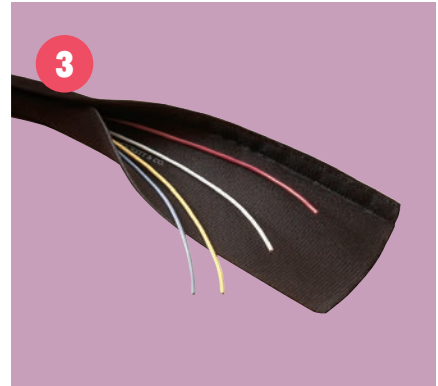
Office



PCS86B/M/U1
Clamp Mount Power Grommet
2 Power/Dual USB



UCS3
Mini Under Desk USB Charger
2 USB Chargers



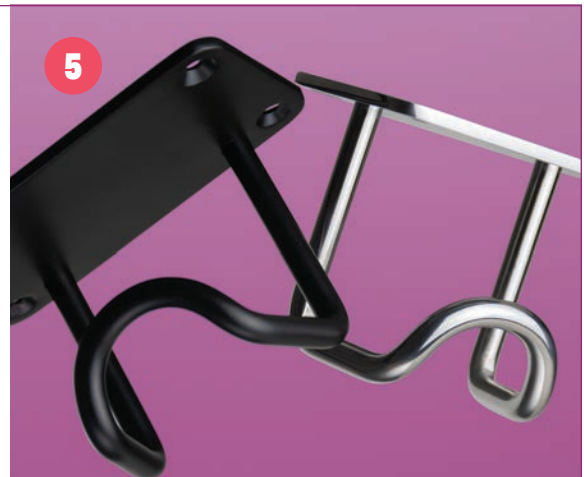
WM11A
Flexible Tube Wire Manager with VELCRO®
Brand FASTENERS



TLEL4
Electric Adjustable Standing Height Table
Leg Set for Standalone Desks

HK29
Hitch Purse Hook

Versatile utility hook
has a very minimalist
design with a focus
on functionality and
an industrial style
that will go with any
contemporary furniture.



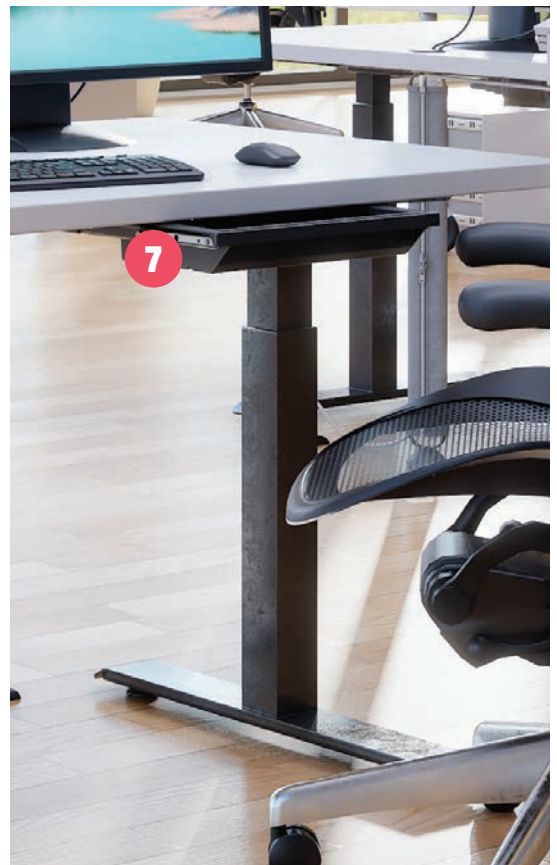
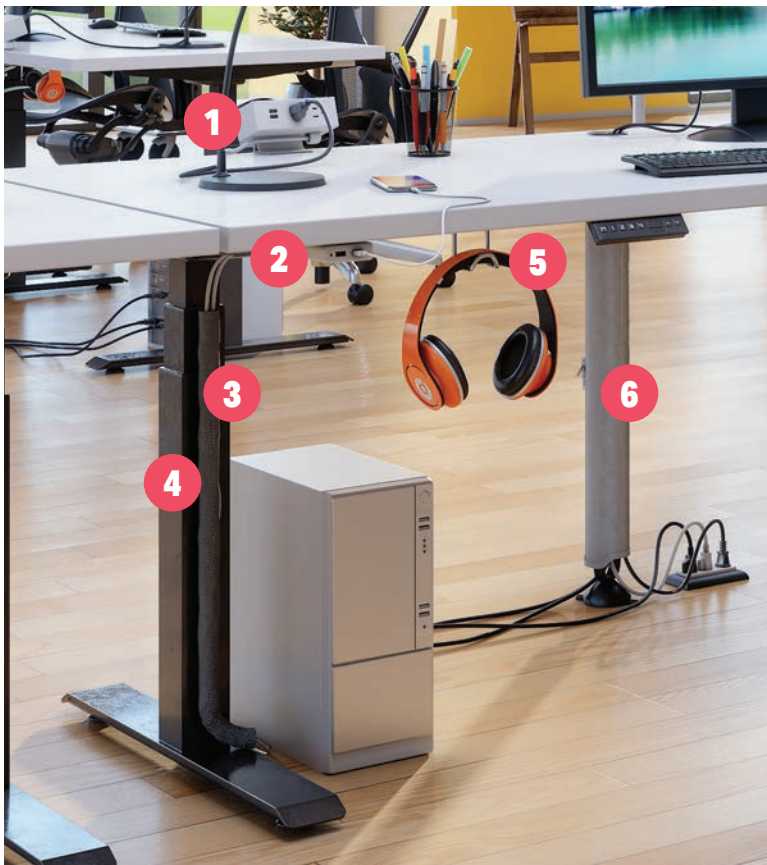
WM32
Cable Wrap Sleeve Wire Manager



DWR7
Small Single Storage Drawer

Office

Work Desks cater to individual needs, easily customizable with our collection of retrofit hardware.



Office

Conference Rooms service demands on a larger scale. More connectivity, more wires, more accommodations to consider.



Office

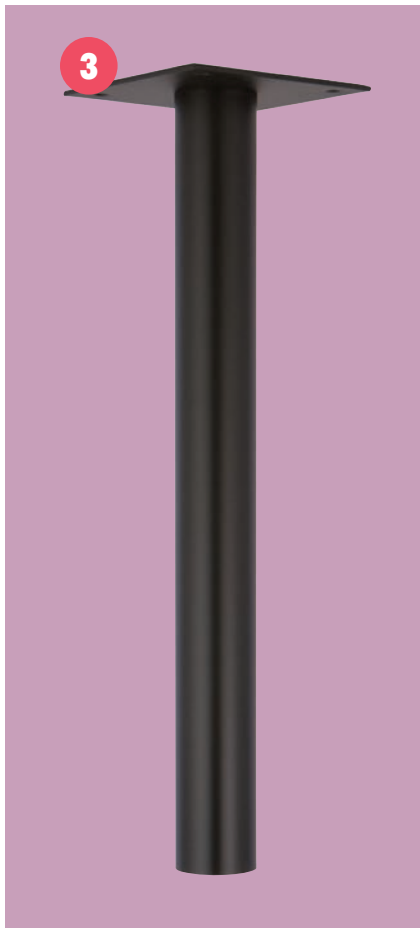
MM SERIES

Solid Brass Grommet Sets

Available in four hole sizes from 1-7/8" up to 2-7/8" diameter and in seven finishes. Great for executive desks and conference tables or use anywhere to dress up your work station.



WM20
Oval Spine Wire Manager
Screws under desk, comes with weighted base



TL28R-3
Original Great Lookin' Legs®
28-1/2" Table Leg, 3" Diameter



PCS36A/USB
Pop-Up Power Grommet
1 Power, Dual USB Charger



PCS36/2/B/U1
Medium Dual Pop-Up Power Grommet
4 Power, 2 Dual USB Chargers



DP120A
Aluminum Rectangular Drawer Pull
5-19/32" Long

Office

1



PGRP7

Quad Panel Bracket – Hold up to 4 Privacy Screens

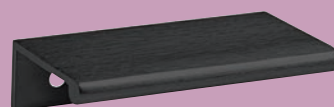
2



PCS109

Ivory Tower Pull-Up Power & USB Charging

3



DP3A/AM

Antimicrobial Tab Drawer Pull – Kills 99.9% of Germs – 3" length

4



PCS100C

Recessed Power Grommet – 3 Power/Dual USB/Data

5



WM39

Spine Wire Manager Kit with Magnets and Floor Base Quad Connector

WM40

*Under-Desk Cable Tray Wire Manager Set
(can be used with WM39 as a set)*

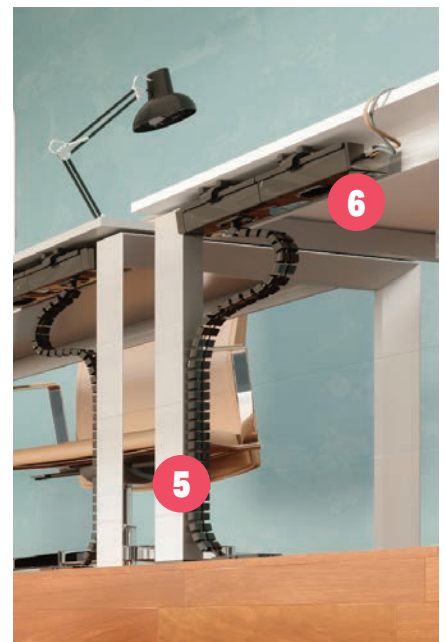
Manage heavy duty cabling under your desk and move your cables cleanly and efficiently out of sight. Link up additional kits for longer runs as needed. Set includes two cable troughs that snap together totaling 16-3/4" in length and two mounting brackets with release clips.



6

Office

Common Areas like break rooms, lounges, and open seating areas can all benefit from having convenient charging stations, power and data ports, wire management and other amenities to enhance the user experience.



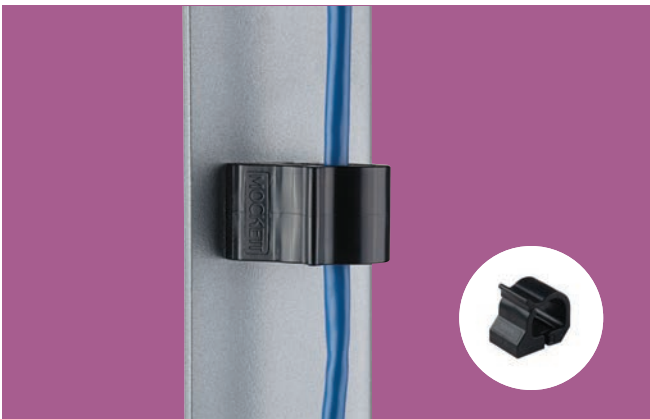
Office



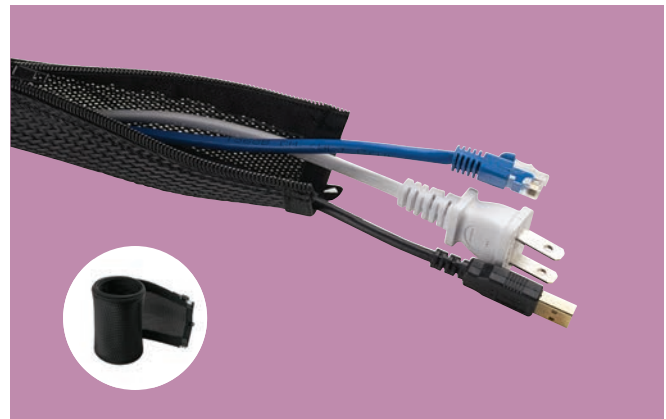
PCS99B
Under Desk Power Dock – 2 Power/Dual Charging USB



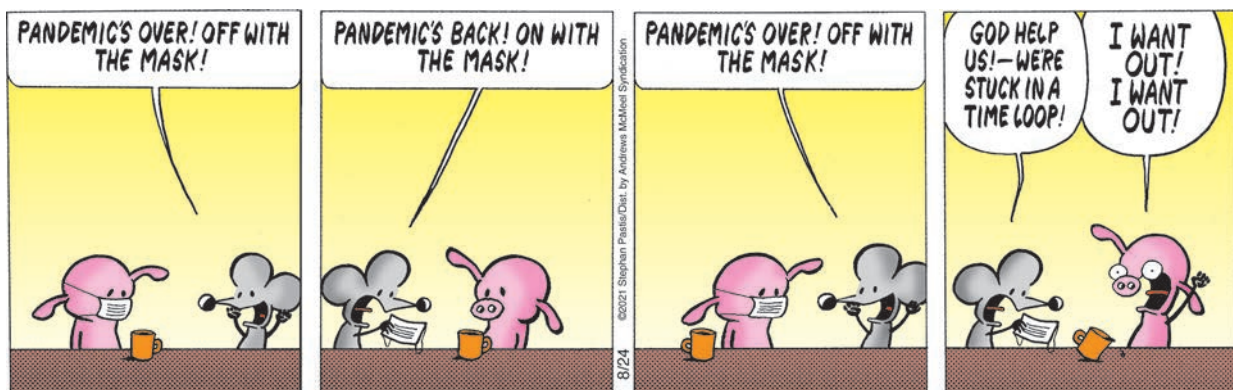
MAX2/A
3-15/16" "The Max 2" Square Small Desk Grommet



WM44
Magnetic Cable Clip



WM47
Braided Cable Manager



PEARLS BEFORE SWINE © 2021 Stephan Pastis. Reprinted by permission of ANDREWS MCMEEL SYNDICATION. All rights reserved.

Office



PCS54D

Recessed 2 Power/1 Data/Dual USB Grommet with Lid

This recessed model sits beneath the surface for a clean unobtrusive look on any table. A thin, hinged-lid cover opens to reveal two electrical outlets rated 15A/125VAC, a dual USB Charger, and one Cat5e data module.



HK33

Swan Coat Hook & Purse Hook (mounts vertically or horizontally)

Graceful arched hook can be used on a wall as a coat hook or under a desk or table as a purse hook. Mounts vertically or horizontally via a separate mounting bracket and the hook slides over the bracket and is secured in place with a set screw to conceal the mounting hardware.

The rounded hook leaves a deep cavity for securing hangers and large purse straps.



Office



PCS86C/U2

*Clamp Mount Power Grommet
3 Power/2 Dual USB*

Bring convenient power and USB charging options to the surface level and say goodbye to rummaging under the desk for lost plugs and hidden receptacles. Adjustable bracket clamps onto the edge of the desk or table for a quick and easy installation. Great for temporary setups and situations that will not allow drilling for cable pass-through. Sophisticated and understated design. Clean, contemporary look goes with any application.



PCS113/WC/U1

*Power Interface – Freestanding Monument
with Microsuction Grip Pads*

Put convenient Power and USB charging at arm's length on your desk, plus wireless charging on top. Rest your phone on the charging surface and an indicator light will confirm a successful pairing with a blinking blue light and charging will commence. Place anywhere on your surface area, wherever power access is needed.



Office

PCS49G

Rectangular Power Grommet – 3 Power/1 USB+C Charger

Add outlets and USB charging options directly into your furniture, wherever convenient power access is needed. Mount into any type of furniture on horizontal or vertical surfaces. Turn your furniture into a functional work space or community charging hub in offices, hotels, and more.



PCS99A

Under Desk Power Dock – 1 Power/Dual USB Charger

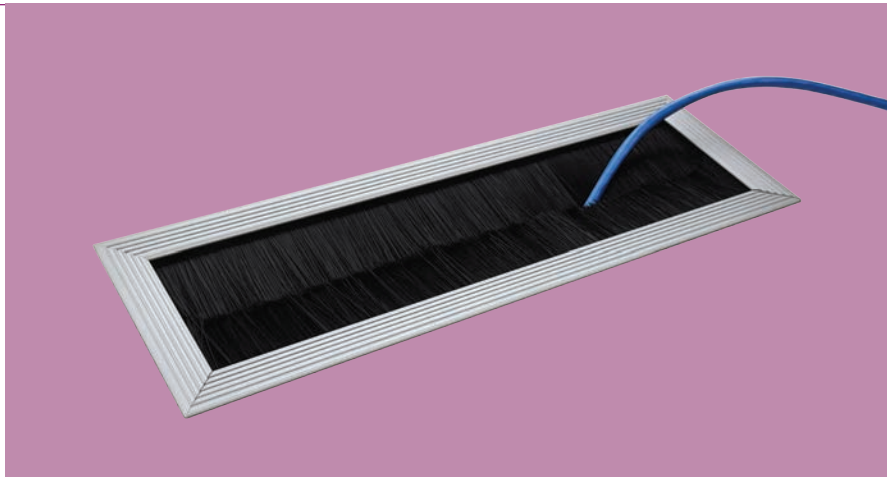
Sleek, minimalist style has a contemporary touch that settles nicely into any workstation. Mounted underneath the front edge of the desk making power options easily accessible at all times and opening up your work surface. Perfect for smaller desks that are unable to accommodate traditional desktop power grommet options due to space constraints.



BRKIT

Brush Extrusion Kit Cable Pass Through Grommet – Sold by the foot, cut to size

Broadcast studios, large conference tables, and outsized credenzas often have requirements for a large channel through which many wires must pass. We offer BR series of brush and optional extrusion in three variations. BRKIT is brush and extrusion cut, mitred and pre-assembled. Just rout slot and drop in. BRKIT is offered in one foot increments to 6 ft.





DP411D – Leather Barrel T-Bar Drawer Pull



PGRP13 – Freestanding Privacy Screen Bracket



Hospitality

Some of our hardest hit industries were truly tested in recent times. Bent but not broken. Through unrelenting resiliency, they hope to roar back with a fiery vigor and tenacity. But things may look a little different with new rules on social distancing.

See how you can make the most of your space with simple additions to your furniture to better serve your customers. Outfit your furniture with charging options and various other furniture components that will not only beautify your space but also provide convenience and utility.



PGRP15 – Ceiling Mount Sign Suspension System

Hospitality

1



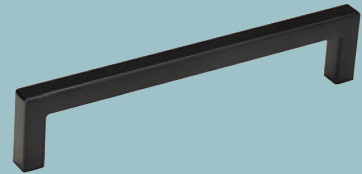
CH58
Double Button Coat Hook

2



PCS85C/U2
Minimalist Surface Mount Power Grommet –
3 Power/2 Dual USB Chargers

3



DP252A
5-3/8" Slender Bar Drawer Pull

4



TL70
2" Square Table Leg, 18" Height

5



PCS106B
Sync II – Low Profile Power Grommet with
Light Switch

6



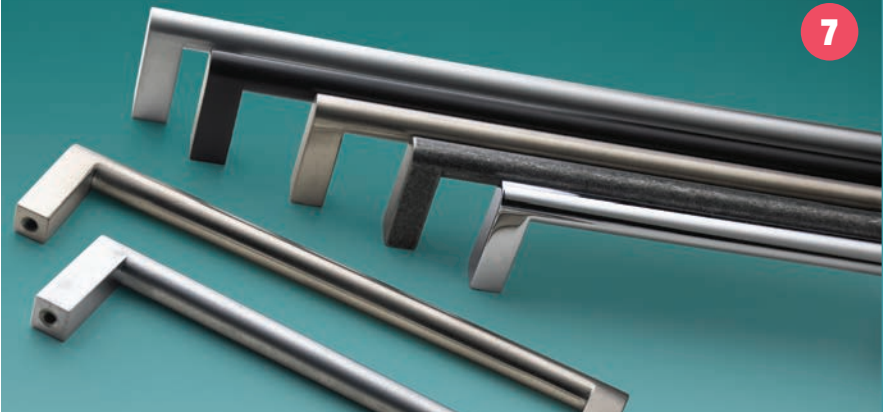
TL47B
34-1/2" Loop Table Leg

DP128

Round Top Drawer Pull

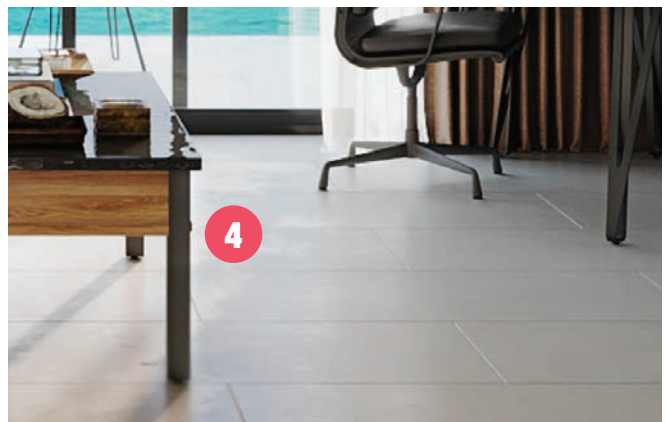
Classic design? Contemporary design? You decide... this exciting pull will go with either style. Use with traditional designs for a bold striking accent or use with modern or eclectic interiors for an understated pop that really stands out. That unmatched versatility is what makes this gorgeous handle the go-to resource for any design.

7



Hospitality

Hotel Rooms are important spaces. Whether traveling for work or leisure, creating a comfortable experience away from home is crucial. All the way down to the details. Give your guests the sensory stimulation they desire with the right finishes, the right textures, and all the functionality of home.



Hospitality

Restaurants & Bars might feel different these days with new safety provisions in place, but we have the tools to easily outfit these reimagined spaces. Plus, we have all the thoughtful additions for furniture that your guests will appreciate like chargers, purse hooks, dividers, and more.



Hospitality

HK20/BB

Dual Purse Hook, Back-to-Back

Versatile double hook for purses, shopping bags, or other personal belongings which can be hung and stowed out of the way. Mount under the center of a small table for access from either side, or mount sideways under a bar or table top to serve two parties at once side by side. Highly durable and fashionably smooth. Grooves help to keep bags from slipping off while providing two storage cavities on either end for multiple bags.



PCS75/USBAC

Round USB-A+C Grommet



PGRP12

Top Cap Privacy Screen Bracket Clamp



PGRP14

Edge Mount Privacy Screen Bracket



SWS2

Inter-Arc Work Support & Counter Support



WCS10

Under-Desk Wireless Charger – Place phone directly on table over charger



Hospitality



PCS117
Dual Power & USB Grommet Console



SWS6
Newport Counter Support



TM2B
8" Dia x 2" Deep Stainless Steel Trash Grommet



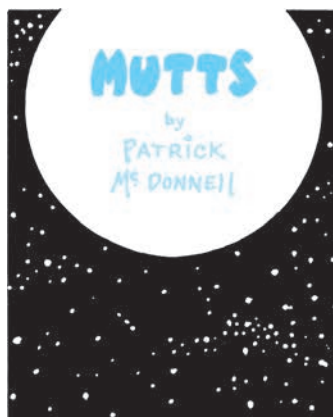
SH55A
24" Minimalist Floating Shelf Bracket



WCS9
In-Desk Recessed Wireless Charging Grommet



TL69A
3" Square Table Leg, 28-3/16" Height



Mutts © 2021 Patrick McDonnell, Dist. By King Features Syndicate, Inc.

Hospitality

Cafés and similar casual dining and takeaway restaurants can benefit from our vast collection of trash management grommets, plus our beautiful table legs for dining tables, panel screen brackets, convenient phone charging options for customers, and other display hardware.



Hospitality



PCS43C/USB

Contemporary Flip-Up Power Grommet
1 Power/Dual USB Charger



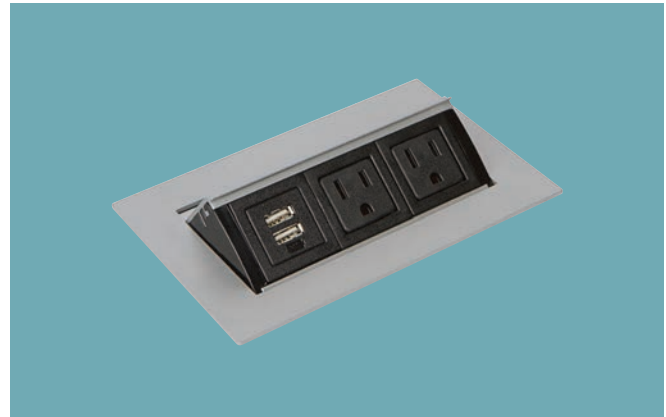
DS2

2-3/8" Diameter Door Stop



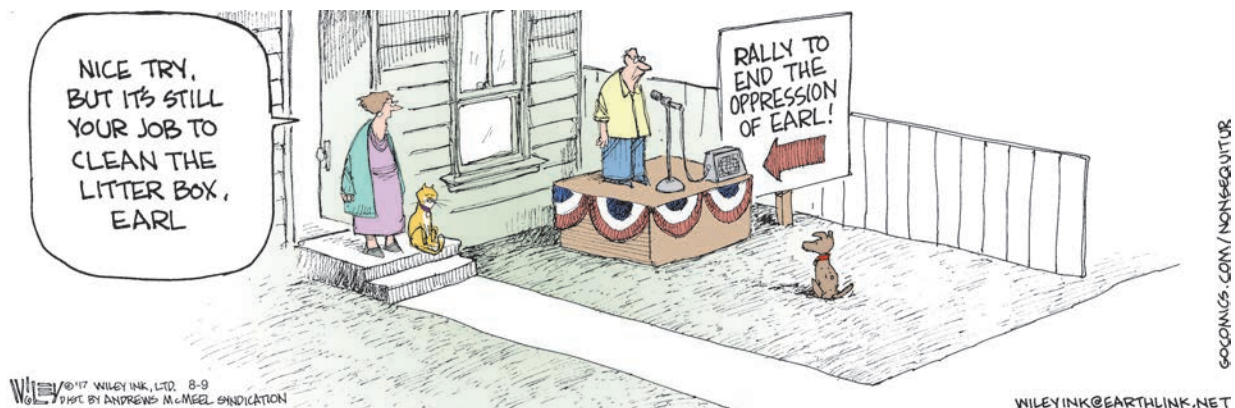
TM10B

10" Dia x 3" Deep Stainless Steel Trash Grommet



PCS82B/U1

Pop-Up Power Grommet - 2 Power/1 Dual USB Charger



NON SEQUITUR © 2021 Wiley Ink, Inc., Dist. By ANDREWS MCMEEL SYNDICATION. Reprinted with permission. All rights reserved.

Hospitality



Spas and fitness centers

can be outfitted with our fabulous assortment of hooks for changerooms and lockers. Our collection spans from traditional to fanciful and everything in between, all with thoughtful contours that offer practical design solutions and utility.

Also enjoy our collection of standoffs for signage and wayfinding purposes. All machined out of aluminum or stainless steel in a variety of sizes. Caps and barrels sold separately so you can mix and match and create dynamic displays.



MPB Series Standoffs

CH11

Longhorn Coat Hook

"Longhorn" metal coat hook can be used "horns up" or "horns down" depending on your hanging needs.

Size: 5-9/32" wide, 1-31/32" base diameter, 1-25/32" projection. Mounting hardware included.

Weight capacity: 25lbs w/ anchor



Hospitality



CH61

Glide Dual Coat Hook

An interesting shape that is just as much decorative as it is functional. Glide has a smoothly rounded swell that separates the upper and lower arm, each with a protruding hook to hold a robe, towel, or clothes in closet or bathroom settings. Glide can also be used in entryways or offices for jackets and other garments.



TL68

Y-Table Leg – Hollow-Bodied Square Leg

Folded steel creates the outer half of a traditional square leg, then splits in different directions at the top to make a Y-shape to connect to the outer edges of the top plate, hence the name Y-Leg.



PCS74/USBA+C

Dome Power Grommet – 2 Power/USB-A + USB-C

Enjoy convenient power and USB charging options directly on your desktop or table surface. The perfect communal charging hub solution for commercial settings and shared use environments. Plus, with two outlets and a USB-A and USB-C combo, you have all bases covered for all devices.



Hospitality



CA32PN

4" Caster with Brake, Satin Nickel Wheel with Plate Mount

Twin wheel caster to complement furniture. Comes with mounting plate and brake. Caster swivels 360°.



TL70

2" Square Table Leg, 18" Height

Square legs have a distinctly modern look and feel that adds an unmistakable sharpness to your décor. This 2" square leg is small enough to subtly settle into the design but just large enough to make a bold contemporary design statement. At 18" high, it covers all the "in-between" furniture such as end tables and accent tables where smaller furniture legs and larger table legs just don't won't cut it. Can also be made in any custom height.





DP284 - Trapezoid Drawer Pull



DP3B – 4" Tab Drawer Pull

Home

Living Spaces underwent some of the most scrutinous examinations in recent times as people spent more time at home, and naturally, there was a collective concession to change.

Whether you are looking to build a new custom home, do a full-scale renovation, or simply replace cabinet handles, we have innovative concepts for every room. Power your furniture with convenient charging grommets, and outfit your space with hooks, handles, furniture legs, and more!



TL69A – 3" Square Table Leg, 28-3/16" Height

Home



1. DP273

Pergola Cast Iron Drawer Pull

Raw, textured cast iron is shaped into a lean, low rise handle with a distinctive Japanese expression.

2. DP6

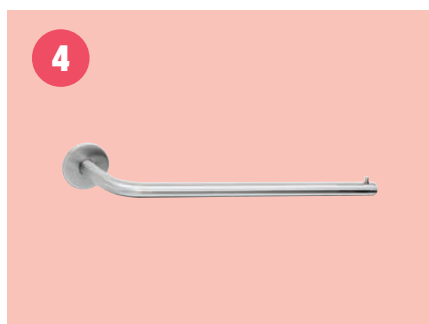
Burfiend Drawer Pull & Cabinet Knob Design Competition Winner

Flat plate with curved top gives the perfect grip for a thumb and forefinger.

3. DP271

Cast Iron Scoop Pull

Bring the farmhouse country kitchen look into the 21st century with this reimagined cast iron scoop handle.



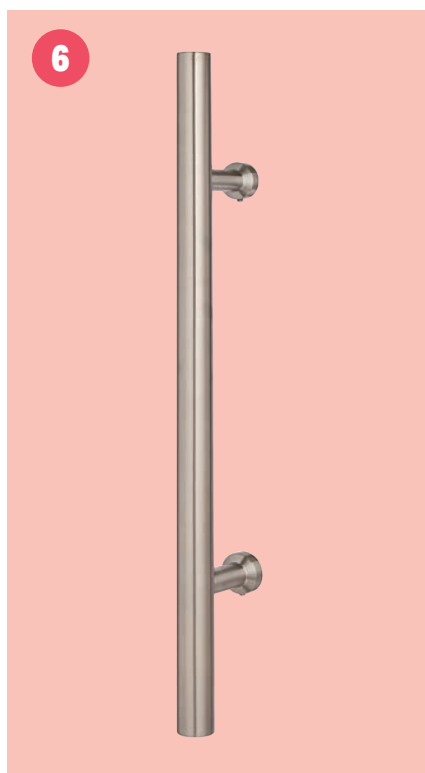
PTH1

13-3/16" Paper Towel Holder



SL-94

Under Sink Liner - Aluminum



DH6A

Door Handle - 19-3/4" Length,
Available Single or Back-to-Back

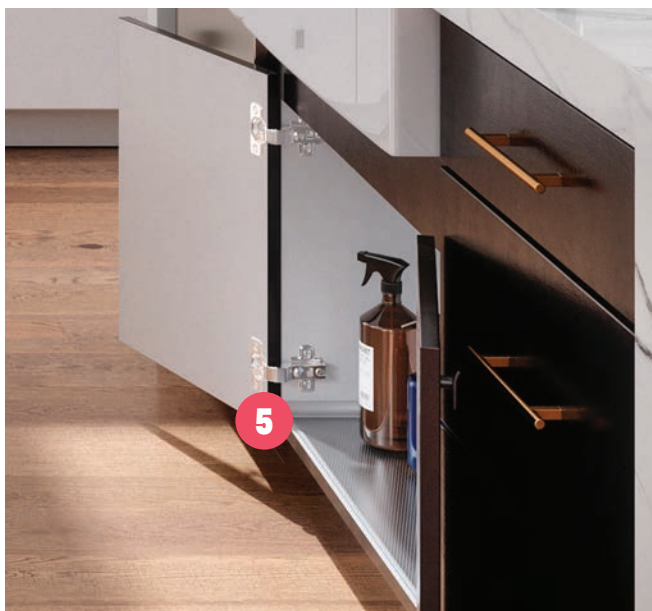


PCS77A/USB

Pop-Up Kitchen Power ® Grommet for
Countertops - 20A GFI Outlets with Dual USB

Home

Kitchens are some of the most compelling spaces in the home. They have a personality all their own and allow for personal expression with lots of opportunities to upgrade your hardware.



Home

Bedrooms are important spaces. Where you rest your head is where you call home. So you want to make sure you equip your space with all the best comforts and stylings. This extends to bath and closet spaces too.

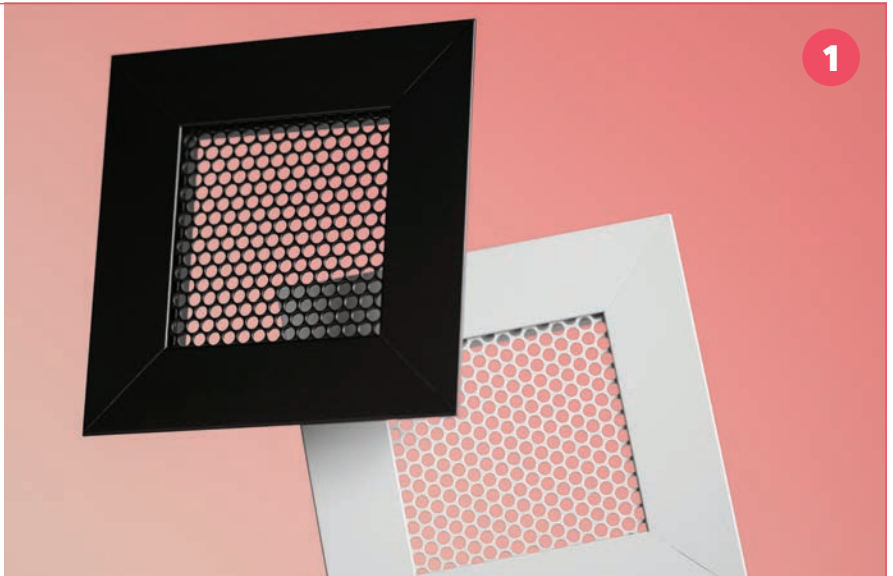


Home

GT GRILLES

*Metal Air Vent Grilles
Design Competition Winner*

Why have a great looking office, beautiful furniture, and bush-league air vent grilles? Especially when you can have this masterful, stylish alternative. The Goldberg-Touhill (GT) Air Vent Grille is available in stock in three standard sizes in Black, White, or Grey, or customize your own in any size or finish with fast and reasonable pricing and lead times.



2



HK22
Barrel Coat Hook

3



SH48B
9-1/32" Elegant Shelf Brackets

4



DP250
Knurled Cabinet Knob

5



PCS85B/USB
Minimalist Surface Mount Power Grommet – 2 Power/Dual USB Charger

6



FL16
4-3/8" Slim Corner Furniture Leg,
Left/Right

Home

1



SH37
3-3/32" Shelf Bracket

2



EDP3
2-1/2" Flip-Top® Grommet Set,
Includes Cap & Liner

3



FSA1/2H
Dual Flat Screen Monitor Arms

PCS98D

Clamp Mount Power Dock – 2 Power/USB/USB-C

All of your charging needs within reach on your desktop without any drilling or cutting required. Easy DIY installation with a simple clamp mount bracket that fastens to the edge of your desk.

4



5



CPU3A
Universal CPU Holder with Casters

6



TL37A
1" x 2" Rectangular Table Leg,
27-7/16" Height

7



DP287A
7-25/32" Brushed Routed Drawer Pull

8



CA32PN
4" Caster with Brake, Satin Nickel
Wheel with Plate Mount

Home

Home Offices went from being a novelty to a critical mainstay in residential design. Bring the office home and customize your workspace with some essential hardware that will allow you to thrive in any space.



Home

DP285

Flight Drawer Pull

Flight Pull is a long, flat and thin aluminum handle that is routed into the top of the drawer for a true fit. Its outstretched wings extend beyond the routed center strip for added cover over the cut and its top extends out and drops down with a small ledge at 90° for a bold contemporary look. Extremely lightweight, yet surprisingly sturdy, this aluminum handle is as sleek and modern as they come.



DS3

1-13/16\"/>

More of a "bumper" design; this version with hefty black rubber bumper comes in Satin Stainless Steel or Aluminum. Comes with partially threaded, hexagonal socket head cap screw and molly for composition floors.



DILBERT © 2021 Scott Adams, Inc. Used By permission of ANDREWS MCMEEL SYNDICATION. All rights reserved.

Home



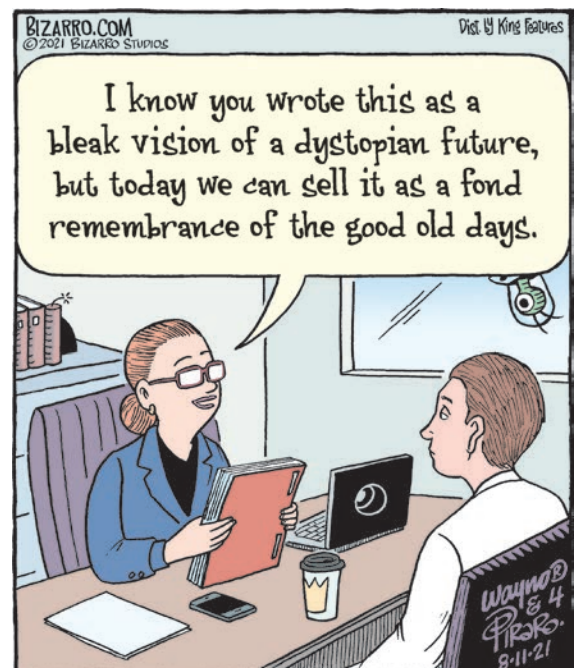
Residential Design is the ultimate platform for personal expression of taste and style. Put your vision on display and embrace your own personal comforts. After all, it is your living space to enjoy. Whether you prefer classic traditional spaces or vibrant eclectic designs, there are a number of opportunities around your home to add hardware accents to your furniture that will tell your story and provide the finishing touches that will define your space.

FL23 – 2" Square Furniture Leg, 5-7/8" Height

FL23

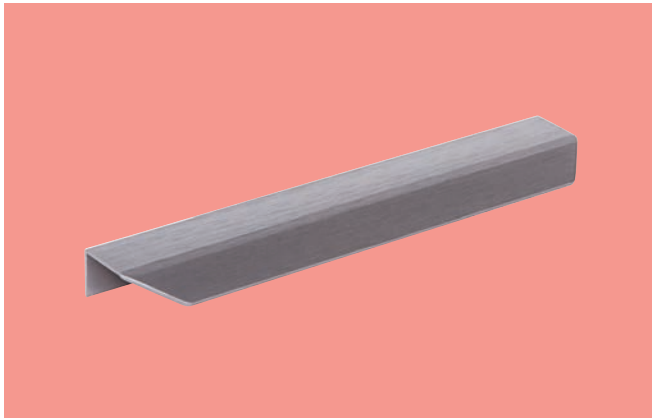
2" Square Furniture Leg

Luxurious furniture leg made from 2" square steel with glide leveler. Versatile contemporary design fits in with any interior style and perfectly complements your furniture. They may be small in stature at 5-7/8" height, but they will make a big splash and a bold statement to complement your décor.



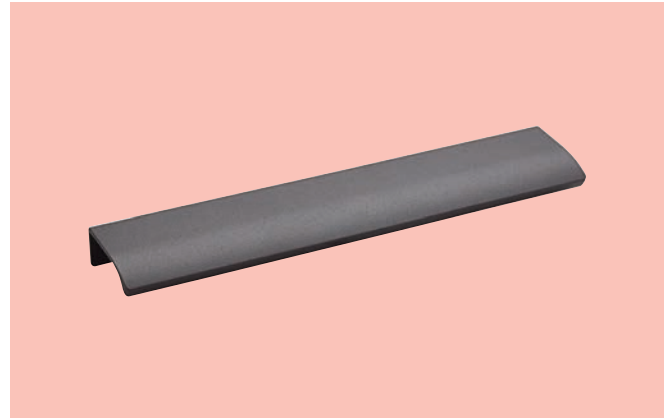
Bizarro © 2021 Dan Piraro, Dist. By King Features Syndicate, Inc.

Home



DP254B

7-7/8" Chamfered Edge Drawer Pull



DP211B

7-7/8" Straight Edge Drawer Pulls



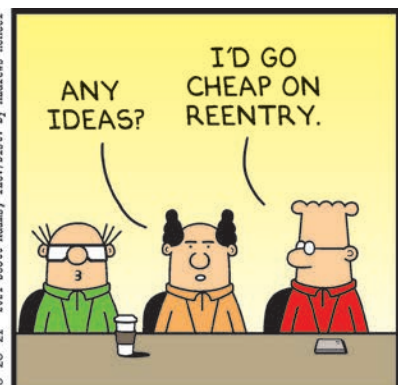
PCS106A

Sync I - Low Profile Power Grommet
2 Power/USB-A + USB-C



PCS103B/EE

Kitchen Counter Pop Up Outlets



DILBERT © 2021 Scott Adams, Inc. Used By permission of ANDREWS MCMEEL SYNDICATION. All rights reserved.

Home



DP286 – Crescent Drawer Pull



PCS110 – Pop Top – Pull Up Power Tower – 3 Power/USB-A + USB-C



PCS62B/USB – Surface Mount Power Grommet



DP129 – Flat Top Drawer Pull



PGRP15 – Ceiling Mount Sign Suspension System

Healthcare

Patient care facilities are delicate spaces - maintaining sterility while still creating a warm and comfortable feeling is a real challenge.

Our simple hardware additions can make a big impact on overall design, making office spaces and non-critical care areas more vibrant, more functional, and more pleasant.

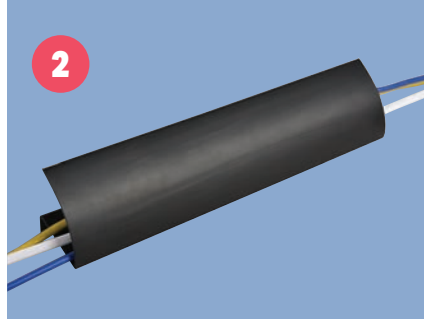
FSA3/2 – Dual Flat Screen Monitor Arm



Healthcare



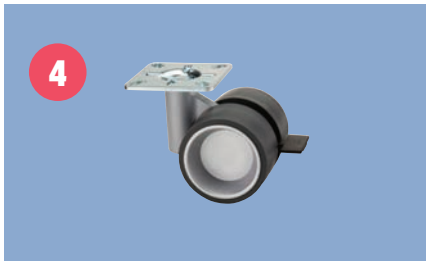
TM2C/SQ
8" Square x 3" Deep Stainless Steel Trash Grommet



WM43
Floor Wiremold Cable Manager
Design Competition Winner



FP1
Foot Pull for Cabinets



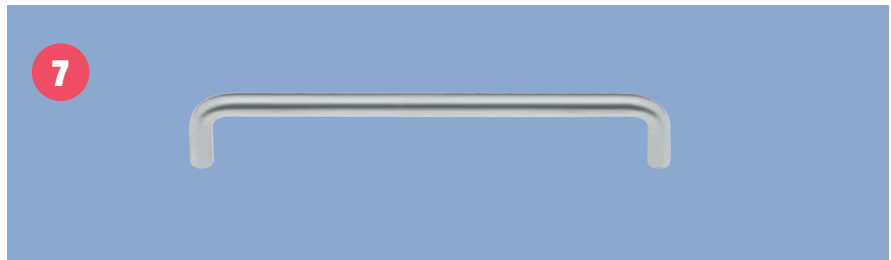
CA42PA
3-1/8" Twin-Wheel Caster



DP3C/AM
Antimicrobial Tab Drawer Pull – Kills 99.9% of Germs – 6" length

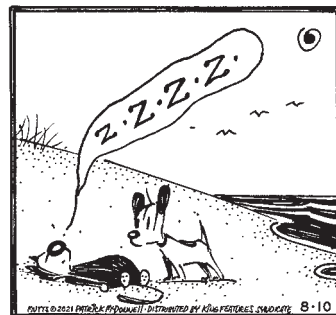


CH23
1-3/8" Button Coat Hook



DP57B
4-5/32" Wire Drawer Pull

MUTTS by Patrick McDonnell



Mutts © 2021 Patrick McDonnell, Dist. By King Features Syndicate, Inc.

Healthcare

Doctor's Offices and non-critical patient care areas need basic hardware essentials to function. A focus on sterility with a touch of comfort through aesthetically pleasing designs.



Healthcare

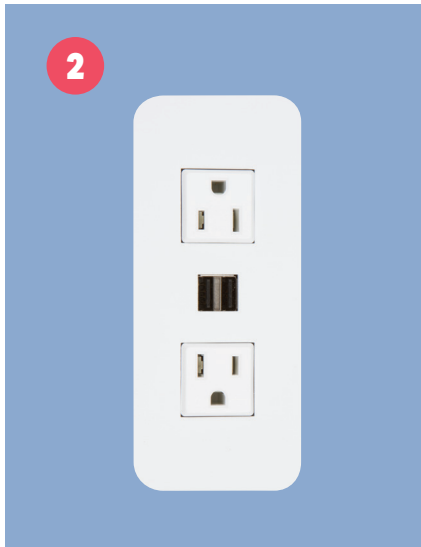
Healthcare Facilities, including administrative and check-in areas, patient waiting rooms, and lobbies offer many opportunities to retrofit furniture with decorative and functional hardware.



Healthcare



CH60
Winston Dual Coat Hook



PCS62B/USB
Surface Mount Power Grommet
2 Power/Dual USB Charger



DHC1
No-Touch Door Handle Forearm Cuff



PGRP13
Freestanding Privacy Screen Bracket



PGRP6
Clamping Privacy Screen Panel Bracket



FSA3/2
Dual Flat Screen Monitor Arm

Healthcare



CH61
Glide Dual Coat Hook



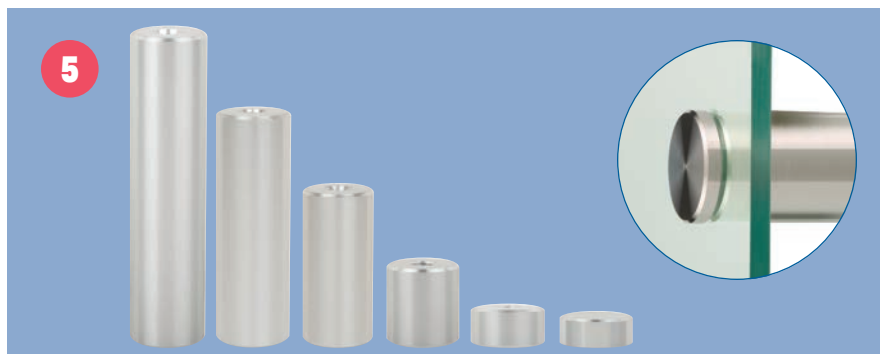
PGRP1B
Privacy Screen Panel Bracket for 3/8"
Material



PCS62M/UE
Mini Surface Mount Power Grommet
1 Power, Dual USB Charger



SWS7B
11-5/8" x 8-5/8" Counter Support



MPB SERIES
Standoff Hardware for Glass

PGRP15

Ceiling Mount Sign Suspension System

This stylish ceiling mount suspension system gives you a number of options for displays of privacy or safety screens. You can hang a partition to create safety barriers for use at transaction desks in commercial spaces. Use with clear acrylic as a privacy screen for reception desks, information desks, and check stands. Or explore beautiful signage solutions for your beautiful display. Hanging signs have a modest presence but make a big impact visually with a clean and contemporary statement to complement your interior.

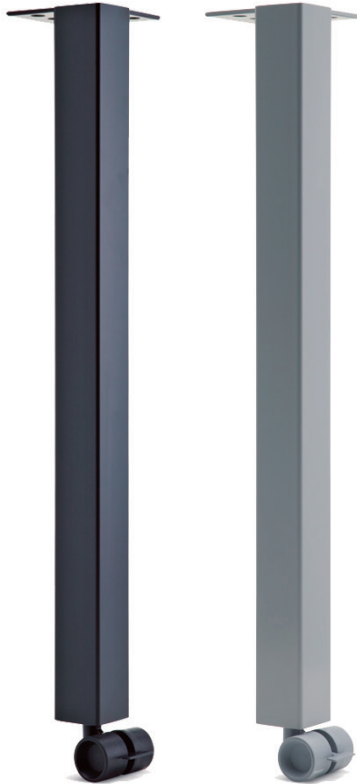


Healthcare

Hospitals and other healthcare facilities demand stylish signage for information and wayfinding throughout their vast interiors and other furniture fittings to make spaces more functional and accommodating.



Healthcare



TL27C/2SQ
27" Square Table Leg with Caster

2" square size is the ideal proportion for many tables. Our leg features an offset top plate so leg can be mounted flush in the corner of the table. Includes caster with brake.



DP269
Drop Edge Drawer Pull

Edge Pulls like you have never seen before. Traditional tab pull shape hooks over the top of your drawer and mounts from behind with a flush fit, then has a distinct front edge that dips down and swells towards the bottom giving ample leverage for opening cabinet doors and drawers.

PGRP11
*Freestanding Panel Bracket Foot
Single or Pair*

For those instances where you need a privacy screen and panel protection as a sneeze guard or partition but you're not able to install into your furniture, or if you work in a dynamic environment where configurations are constantly changing, then freestanding panel bracket feet are the perfect option for you.



Healthcare



TM12B

12" Dia x 3" Deep Stainless Steel Trash Grommet

Great for restrooms, food courts, fast food restaurants, coffee shops, movie theaters, anywhere a public trash receptacle is needed. Available in Polished or Satin Stainless Steel, Antique Bronze, Matte Black, or contact us for details on custom finishes and sizes.

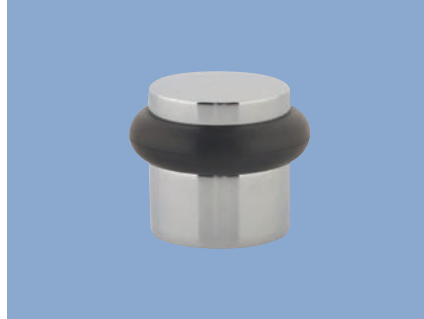


Mutts © 2021 Patrick McDonnell, Dist. By King Features Syndicate, Inc.

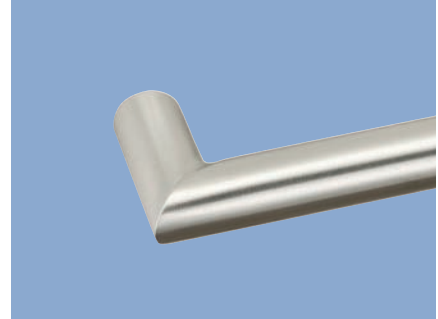
Healthcare



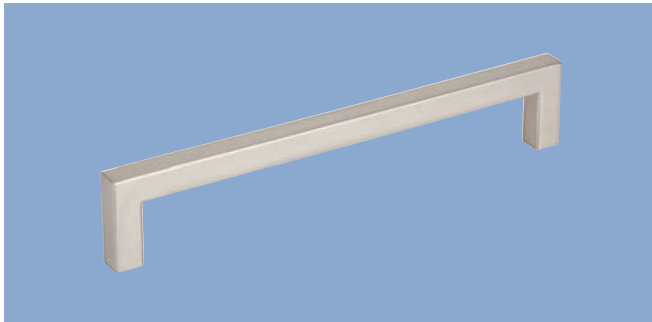
DP196
Mushroom Cabinet Knob



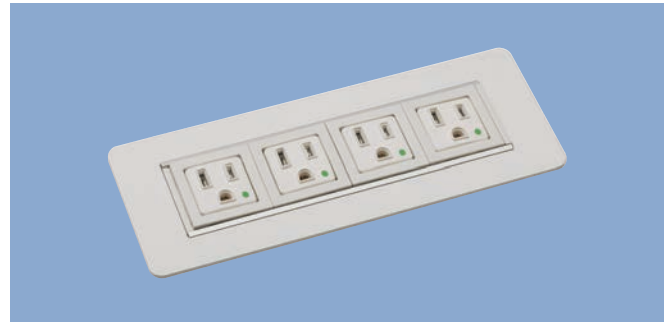
DS6
1-3/16" Cylindrical Door Stop



DP54A
4-1/4" Angled Bar Drawer Pull



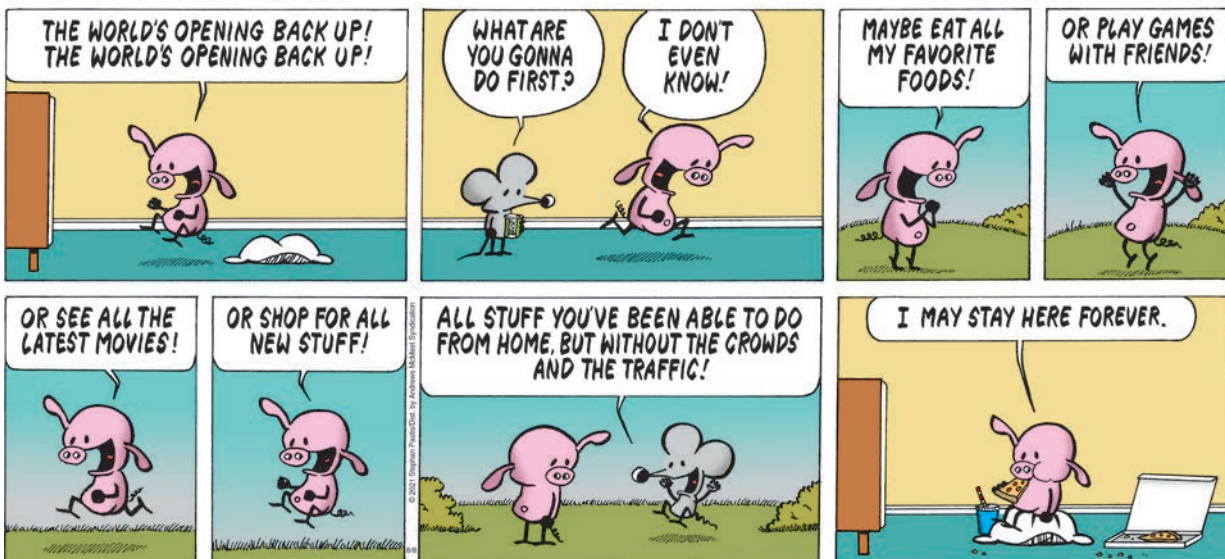
DP105A/6
6-27/32" Square Drawer Pull



PCS49B
Rectangular Power Grommet
Custom Hospital Grade Outlets Available

PEARLS BEFORE SWINE

BY STEPHAN PASTIS



PEARLS BEFORE SWINE © 2021 Stephan Pastis. Reprinted by permission of ANDREWS MCMEEL SYNDICATION. All rights reserved.

Healthcare



FP1

Foot Pull for Cabinets

Hands-free foot pull operates cabinet doors and drawers by using the front of your shoe. Slip toe underneath the handle, lift, and pull. Great for trash bins in cabinets. Front edge has a softened lip that protects your dress shoes from marking or scratching. Easy to open, easy to close. Available in: Matte Black, Matte White, Metallic Silver, or Satin Stainless Steel.





What's a Grommet?

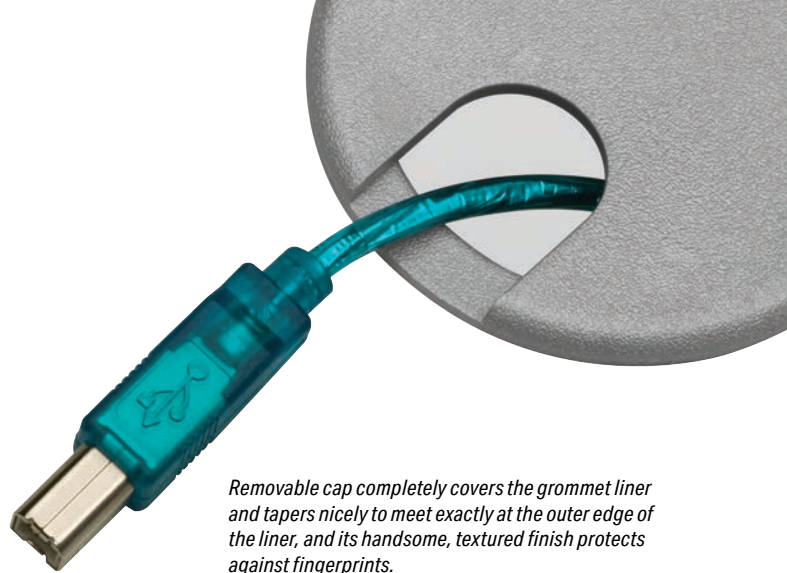
A grommet is simply a liner for the hole in a desk where the wires pass through. We introduced our first exclusive design in 1980, the second in 1981, originally just in black plastic, then in brown – and now – 10 sizes and 15 finishes to suit your every need. Eureka! A star is born! Plus we offer adjustable depth liners, louvered caps for heat ventilation, no-slot solid caps, and more. Our collection of desk grommets addresses all of your cable management needs.



*It all started with one Grommet.
In one size. In one finish.*

*XG3 – Cap & Liner
3" Diameter Hole*

10 Sizes, 15 Finishes										
	AG	OG	BG	SG	TG	SP	EDP	XG	YG	ZG
Overall Size:	1"	1 5⁄16"	1 3⁄4"	2"	2 3⁄8"	2 5⁄8"	3"	3 1⁄2"	4"	4 1⁄2"
Hole Size:	3⁄4"	1"	1 1⁄2"	1 3⁄4"	2"	2 1⁄8"	2 1⁄2"	3"	3 1⁄2"	4"
										
	23 Metallic Silver	90 Black	91 Walnut Brown	91M Mahogany	92 Light Grey	92N Navy Grey	92W Warm Grey			
										
	93 Putty	93D Desert Sand	93P Pecan	95 White	3 Polished Brass	10B Antique Bronze	26 Polished Chrome	26D Satin Chrome		



Removable cap completely covers the grommet liner and tapers nicely to meet exactly at the outer edge of the liner, and its handsome, textured finish protects against fingerprints.

L03A

King Kong® Desk Grommet Set

L03A grommet set with 1-1/8" deep liner fits into a 6" x 2-1/2" oval slot. Includes L01A liner and L02 cap with Flip-Top® tab. Tab swings up and completely covers slot when L03A is not in use.



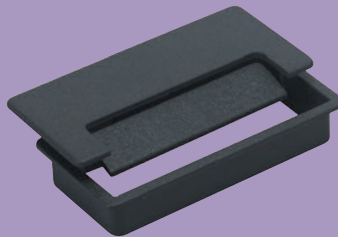
When our traditional round grommet sets don't fit the job, we have other shapes, sizes, and solutions too! Our LO Oval King Kong® Grommets and RG Rectangular Sherlock® Grommets are great for conference tables and large work desks with additional cables. Removable caps and Flip-Top® lids make access to cables a cinch.

RG3

Sherlock® Rectangular Desk Grommet

RG3 grommet fits into a 3-3/4" x 1-3/4" slot. Includes liner and cap with Flip-Top® tab which swings up and covers cord slot completely when RG3 is not in use.

Size: 4" x 2" overall, 5/8" deep.
Cord slot size: 3" x 3/4"



Or when you need to dress up your fine furniture with a stylish Solid Brass Grommet, our MM Series is the perfect solution. Available in four sizes and seven finishes. Sold as a set or individually as cap or liner.

MM3/SET

Solid Brass Desk Grommet Cap & Liner

Solid brass grommets are ideal for fine executive desks and credenzas, conference tables and computer stations. Why brass? Unlike cheaper and shoddier metals, brass polishes and plates much better than steel, resulting in a far superior finish. Fits into a 1-7/8" diameter hole.



19
95

THEN

Our First Power & Data Grommet



20
21

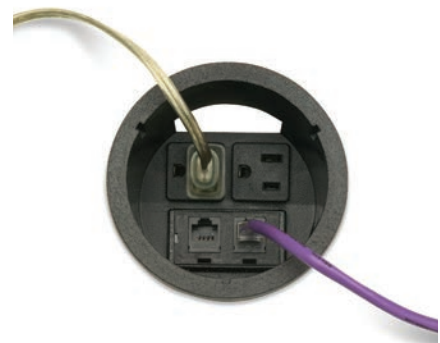
NOW

Our Newest Power Grommet



When we first started in the grommet biz, who knew we'd soon be supplying actual power and data options in the surface? It was a natural next step though, skipping ahead from cable pass-through to actual connectivity right in the tabletop to put those convenient power options right at your fingertips.

We are proud to offer an extraordinary line of power grommets, from our classic PCS1, our very first power & data grommet design 25 years ago, to PCS120, our latest motorized pop-up tower with a sleek and contemporary design for your modern furniture. With hundreds of options available, we have just what you need.



PCS1A - Power & Data Round Desktop Grommet



SHADOW

Electric Pop-Up Power Wireless Charging Top

Shadow pops up for access to power and USB charging, then collapses into the surface when not in use, all with the press of a button. Whisper-quiet motor and ultra-smooth operability. Press to stop at any height during its ascent or descent.



PCS120/WC



Includes a wireless charger on top with a luminous trim ring that signifies a successful pairing with your mobile device. Wireless charging top and USB ports on the tower both support fast-charging technology.

DP3 SERIES

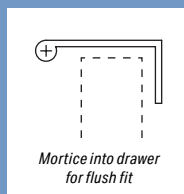
TAB DRAWER PULLS

*Some things never
go out of style.*



A Timeless Classic

Classic trim, contemporary style. You can't go wrong with our DP3 Tab Pull Series – they go with all types of furniture! That unmatched versatility is also touted by its 15 sizes and 11 finishes to mix and match on different sized drawers and cabinets. Easily customizable to any length or finish. Talk about options! Also available for doors and oversized furniture pieces with a larger 3" profile in four standard lengths.



*Antimicrobial Finish available on
select sizes. Kills 99.9% of Germs.*

	PROJECTION	OVERALL LENGTH	ON CENTER
DP3	1-1/2"	1-1/4"	5/8"
DP3A	1-1/2"	3"	2"
DP3B	1-1/2"	4"	3"
DP3C	1-1/2"	6"	5"
DP3D	1-1/2"	8"	3"
DP3E	1-1/2"	10"	4"
DP3F	1-1/2"	12"	3-5/16"
DP3G	1-1/2"	14"	4"
DP3H	1-1/2"	16"	4-21/32"
DP3I	1-1/2"	18"	5-11/32"
DP3J	1-1/2"	20"	6"
DP3K	1-1/2"	22"	6-21/32"
DP3L	1-1/2"	24"	7-11/32"
DP3B/2	2"	4"	3"
DP3C/2	2"	6"	5"
DP3/DR/6	3"	6"	4"
DP3/DR/8	3"	8"	3"
DP3/DR/10	3"	10"	4"
DP3/DR/12	3"	12"	3-11/32"

“Fine
Architectural
Hardware
For
Your Fine
Furniture”



800.523.1269 | 310.318.2491 | info@mockett.com

www.mockett.com