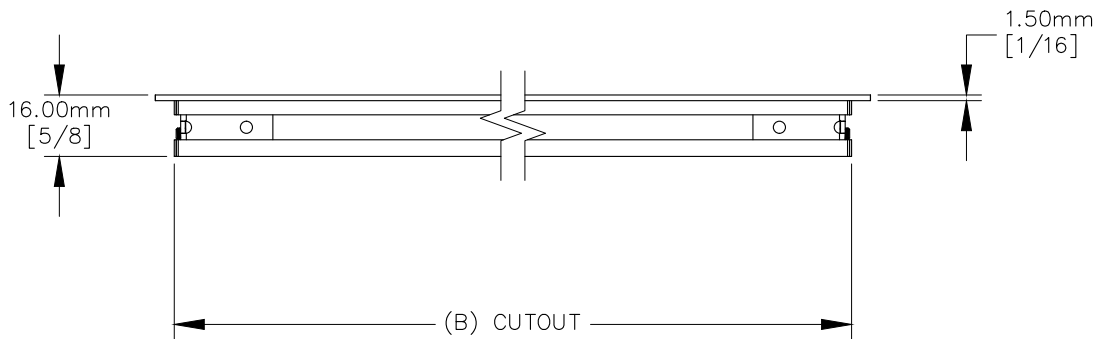
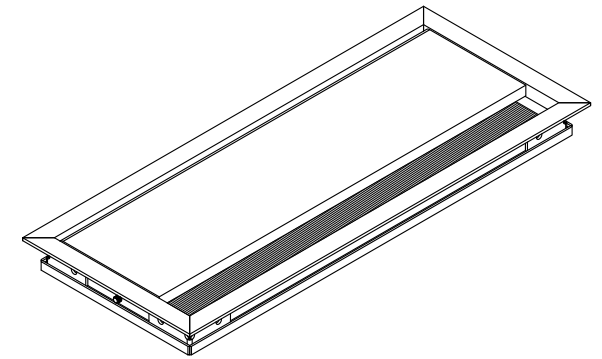


TOP VIEW

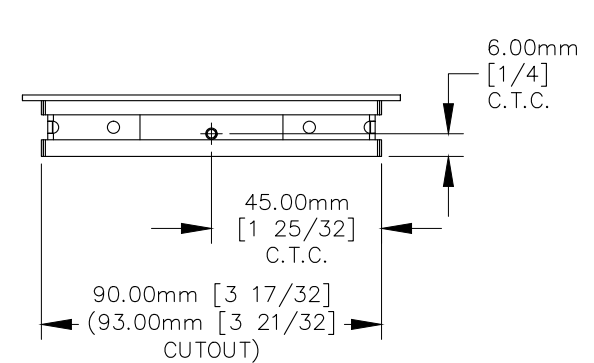


FRONT VIEW



NOTE:

1. Recommended table thickness is 19.00mm [3/4] MIN.



RIGHT VIEW

	(A)	(B)	(C)
MAX2/A/M	100.00mm [3 15/16]	93.00mm [3 21/32]	70.00mm [2 3/4]
MAX2/B/M	240.00mm [9 7/16]	233.00mm [9 3/16]	210.00mm [8 9/32]
MAX2/D/M	450.00mm [17 23/32]	443.00mm [17 7/16]	420.00mm [16 17/32]