









MPB9/WM

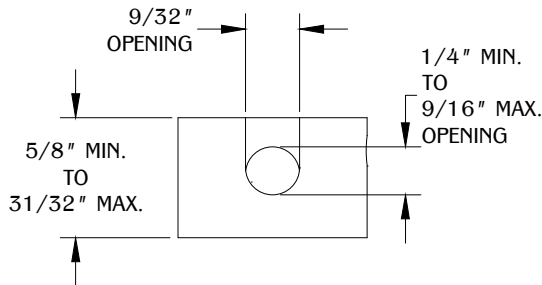
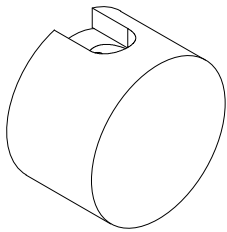
PROPRIETARY AND CONFIDENTIAL.
ALL DIMENSIONS HAVE A +/- 1/32" TOLERANCE UNLESS OTHERWISE SPECIFIED. WE DO NOT RECOMMEND DRILLING OR CUTTING ANY HOLES BEFORE RECEIVING A PRODUCT OR A PRODUCT SAMPLE.

SPECIFICATIONS

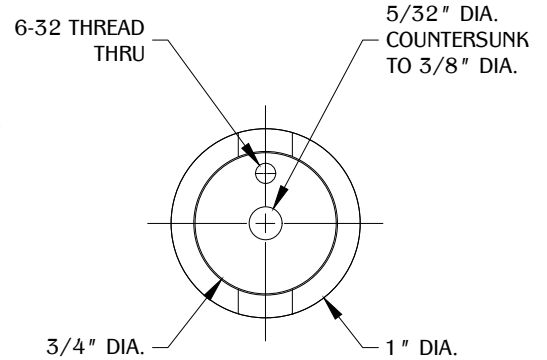
- Maximum cord diameter is 1/4".

TABLE OF CONTENTS

 4X MPB9/WM Cap
 4X MPB9/WM Mounting Base
 4X Plastic Anchor
 4X 1/8" 6-32 Thread Set Screw
 1X 1/16" Hex Key
 4X 3/16" 6-32 Thread Set Screw
 4X 1-13/32" No. 8 Wood Screw
 4X 1/2" No. 8 Wood Screw

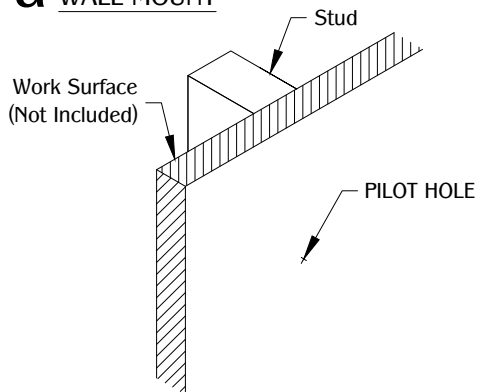


TOP VIEW



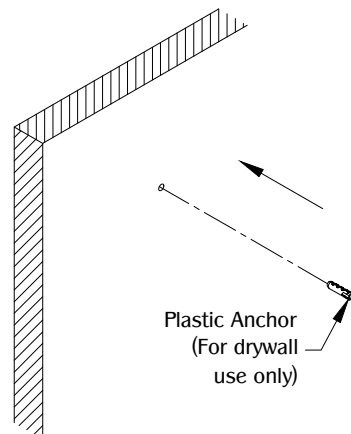
REAR VIEW

1a WALL MOUNT



Determine the position and location of the part on the work surface. Mark the position for the mounting hardware and drill a 3/16" diameter pilot hole for drywall installation or a 1/8" diameter pilot hole for stud installation.

2a



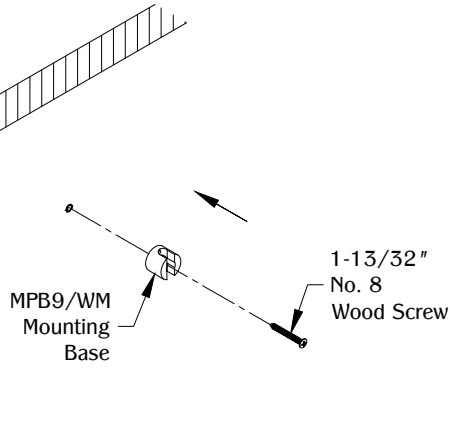
Place plastic anchor into the pilot hole. (Skip this step for wood installation.)

MPB9/WM

PROPRIETARY AND CONFIDENTIAL.

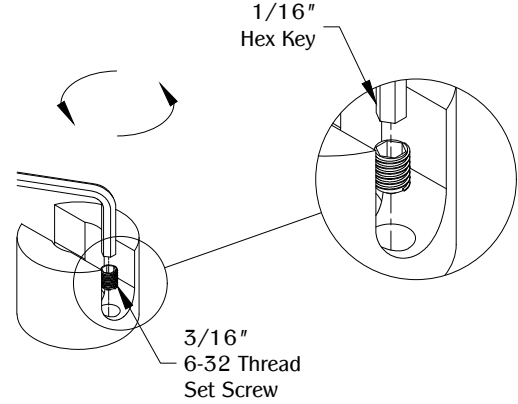
ALL DIMENSIONS HAVE A +/- 1/32" TOLERANCE UNLESS OTHERWISE SPECIFIED. WE DO NOT RECOMMEND DRILLING OR CUTTING ANY HOLES BEFORE RECEIVING A PRODUCT OR A PRODUCT SAMPLE.

3a



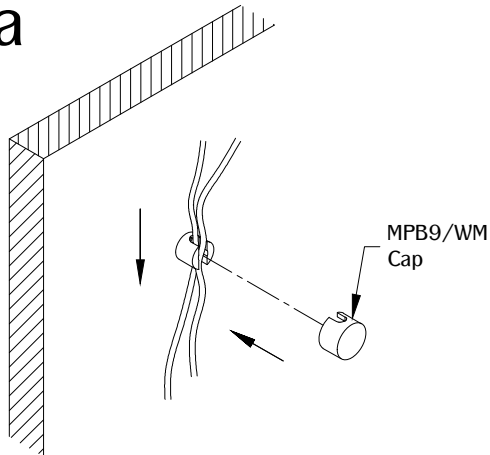
Align and secure the MPB9/WM mounting base with the 1-13/32" No. 8 wood screw.

4a



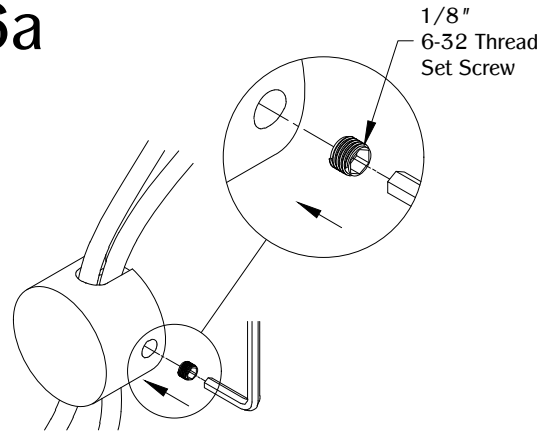
Align the 3/16" 6-32 thread set screw to MPB9/WM mounting base and hand-tighten with the 1/16" hex key.

5a



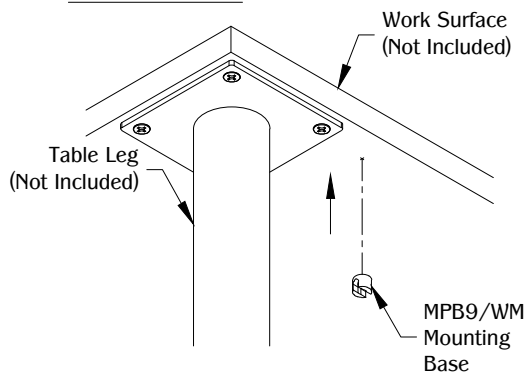
Feed wires through the MPB9/WM mounting base and then align the MPB9/WM cap to the MPB9/WM mounting base.

6a



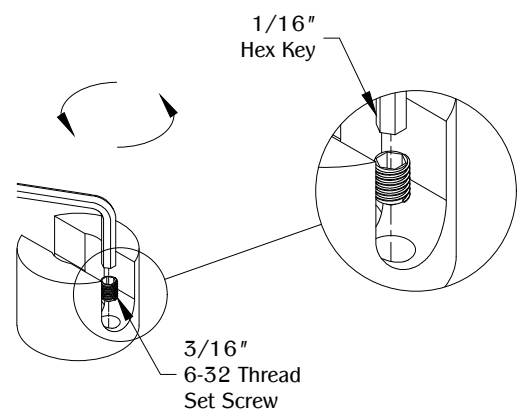
Secure the MPB9/WM cap to the MPB9/WM mounting base by using 1/8" 6-32 thread set screw and hand-tighten with the 1/16" hex key. Repeat steps 1a-6a three times.

1b UNDER MOUNT



Determine the position and location of the part under the work surface. Mark the position for the MPB9/WM mounting base.

2b

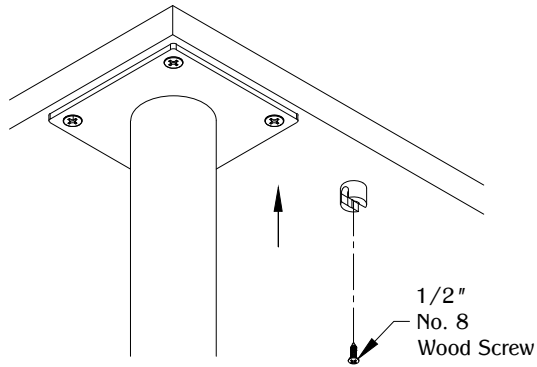


Align the 3/16" 6-32 thread set screw to MPB9/WM mounting base and hand-tighten with the 1/16" hex key.

MPB9/WM

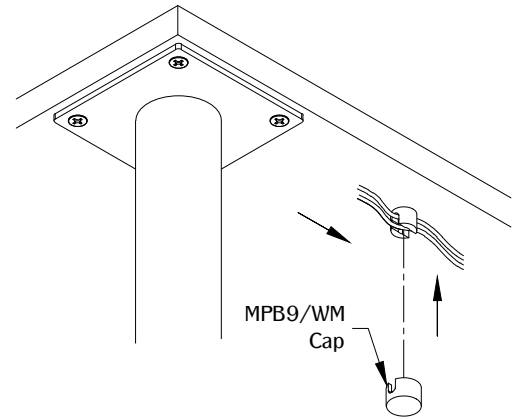
PROPRIETARY AND CONFIDENTIAL.
ALL DIMENSIONS HAVE A +/- 1/32" TOLERANCE UNLESS OTHERWISE SPECIFIED. WE DO NOT RECOMMEND DRILLING OR CUTTING ANY HOLES BEFORE RECEIVING A PRODUCT OR A PRODUCT SAMPLE.

3b



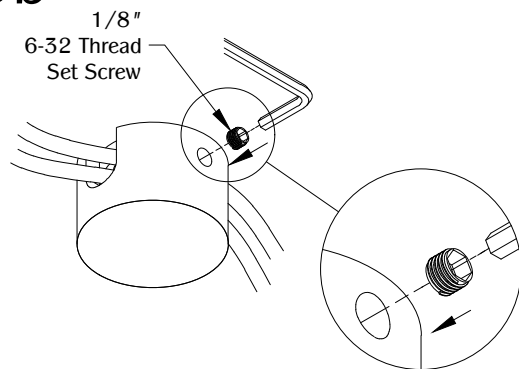
Secure the MPB9/WM mounting base under the work surface with a 1/2" No. 8 wood screw.

4b



Feed wires through the MPB9/WM mounting base and then align the MPB9/WM cap to the MPB9/WM mounting base.

5b



Secure the MPB9/WM cap to the MPB9/WM mounting base by using 1/8" 6-32 thread set screw and hand-tighten with the 1/16" hex key. Repeat steps 1b-5b three times.