

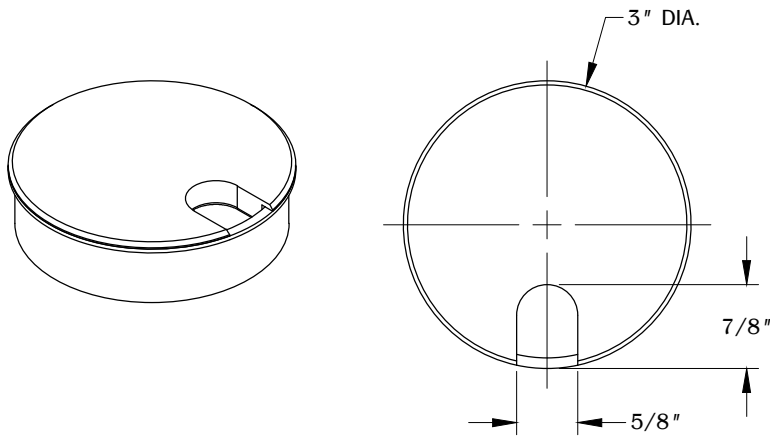
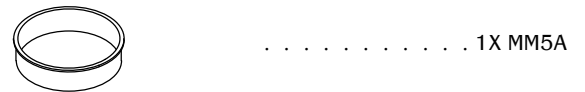
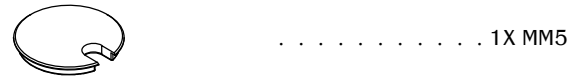
MM5/SET

PROPRIETARY AND CONFIDENTIAL.
ALL DIMENSIONS HAVE A +/- 1/32" TOLERANCE UNLESS OTHERWISE SPECIFIED. WE DO NOT RECOMMEND DRILLING OR CUTTING ANY HOLES BEFORE RECEIVING A PRODUCT OR A PRODUCT SAMPLE.

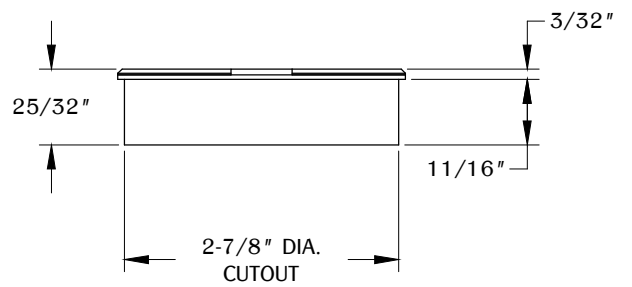
SPECIFICATIONS

- Maximum cord diameter is 5/8".

TABLE OF CONTENTS

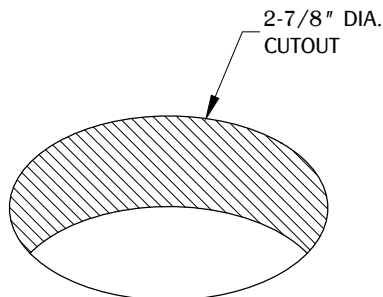


TOP VIEW



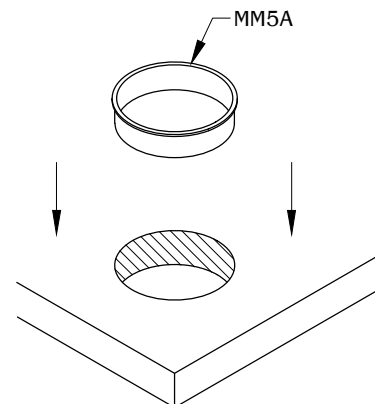
FRONT VIEW

1



Make a cutout in the desired location on your work surface.
Allow enough clearance for part function.

2

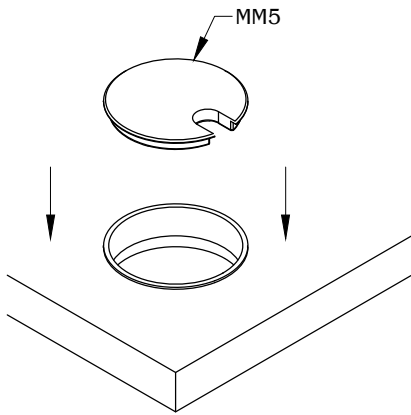


Install the MM5A into the cutout and make sure it is fully leveled onto the work surface.

MM5/SET

PROPRIETARY AND CONFIDENTIAL.
ALL DIMENSIONS HAVE A +/- 1/32" TOLERANCE UNLESS OTHERWISE SPECIFIED. WE DO NOT RECOMMEND DRILLING OR CUTTING ANY HOLES BEFORE RECEIVING A PRODUCT OR A PRODUCT SAMPLE.

3



Insert MM5 into the MM5A.