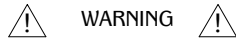


HK38

PROPRIETARY AND CONFIDENTIAL.
ALL DIMENSIONS HAVE A +/- 1/32" TOLERANCE UNLESS OTHERWISE SPECIFIED. WE DO NOT RECOMMEND DRILLING OR CUTTING ANY HOLES BEFORE RECEIVING A PRODUCT OR A PRODUCT SAMPLE.



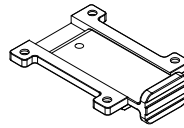
WARNING

- Allow enough clearance for part operation.

SPECIFICATIONS

- Weight capacity is 20 lbs.
- Table thickness is 3/4" MIN.

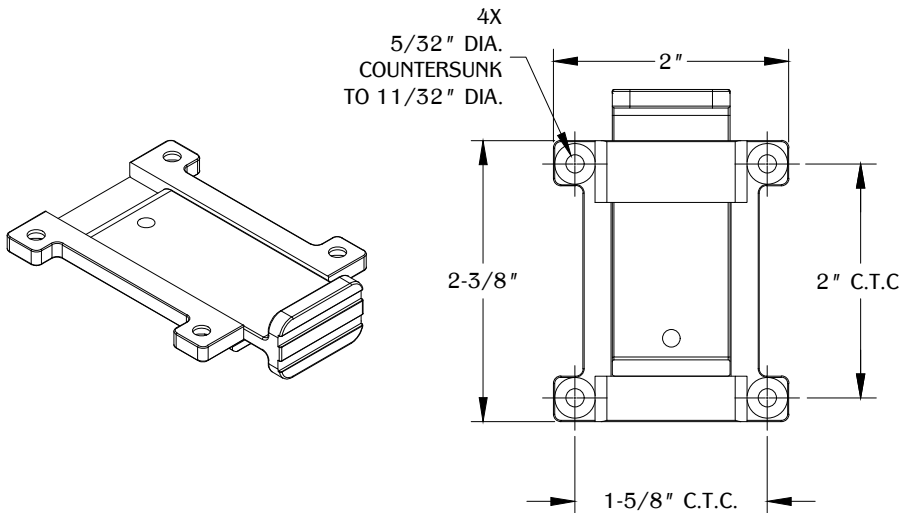
TABLE OF CONTENTS



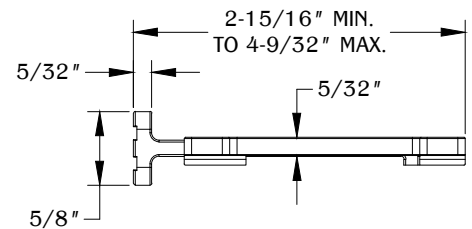
..... 1X HK38



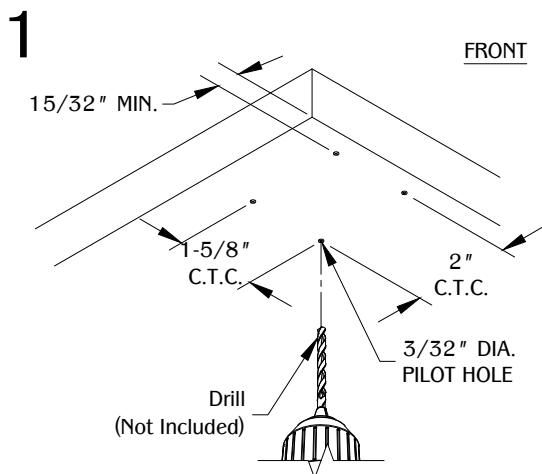
..... 4X 3/4"
No. 7
Wood Screw



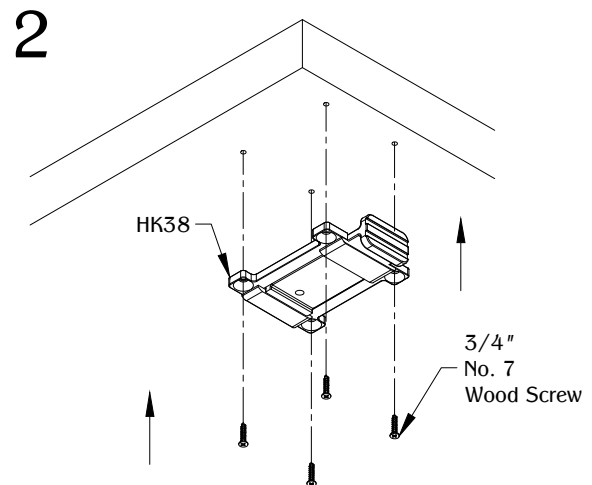
BOTTOM VIEW



SIDE VIEW



Determine the position and location of the part under the work surface. Allow 15/32" minimum clearance from the front edge for part to function. Mark the mounting positions for the mounting hardware and drill (4) 3/32" diameter pilot holes. (Note: Use appropriate pilot hole depth depending on the thickness of the work surface.)



Align HK38 mounting holes to pilot holes. Use (4) 3/4" No. 7 wood screws to secure the part under the work surface. (Note: Use appropriate mounting hardware type and length depending on the material and thickness of the work surface.)