

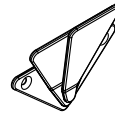
CH70

PROPRIETARY AND CONFIDENTIAL.
ALL DIMENSIONS HAVE A +/- 1/32" TOLERANCE UNLESS OTHERWISE SPECIFIED. WE DO NOT RECOMMEND DRILLING OR CUTTING ANY HOLES BEFORE RECEIVING A PRODUCT OR A PRODUCT SAMPLE.

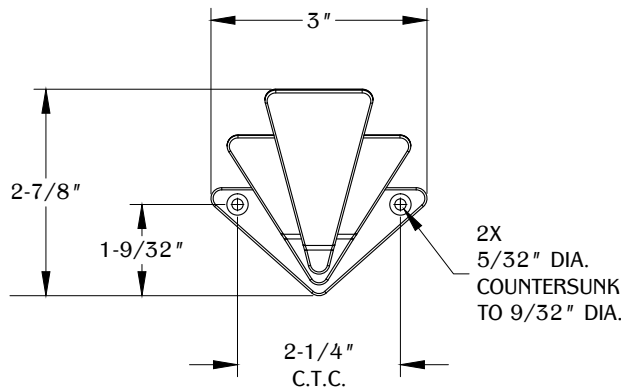
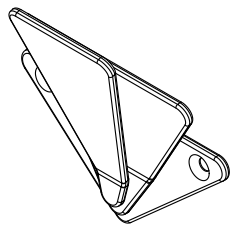
SPECIFICATIONS

- Weight capacity is 10 lbs.

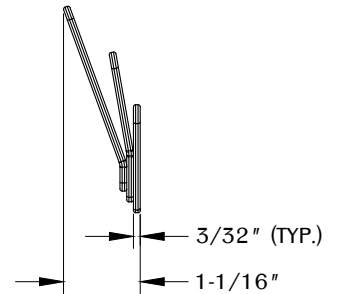
TABLE OF CONTENTS



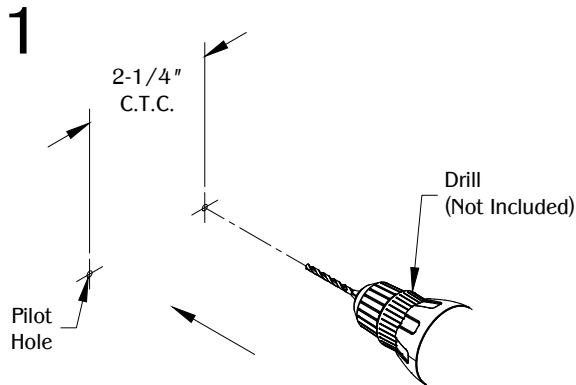
..... 1X CH70



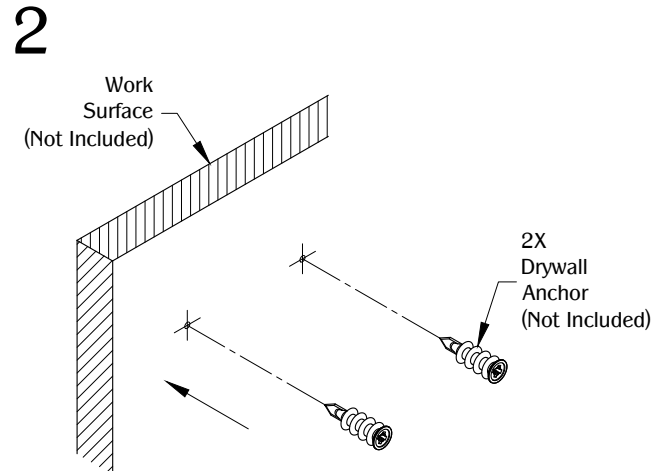
TOP VIEW



RIGHT VIEW



Determine the position and location of the part on the work surface. Mark the mounting positions for the mounting hardware and drill (2) 3/16" diameter pilot holes for drywall installation or (2) 3/32" diameter pilot holes for wood installation.



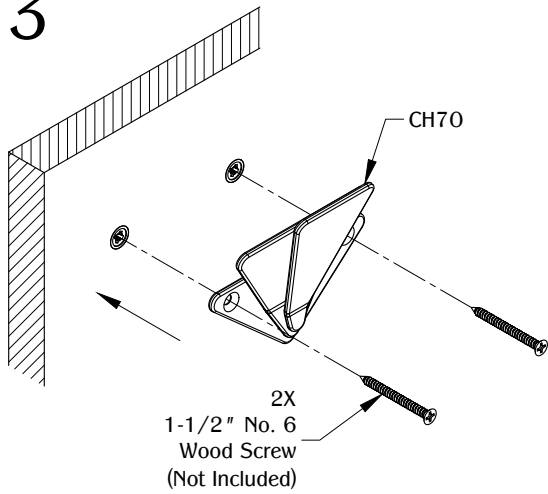
Install (2) drywall anchors into the pilot holes. (Note: Skip Step 2 for wood installation.)

CH70

PROPRIETARY AND CONFIDENTIAL.

ALL DIMENSIONS HAVE A +/- 1/32" TOLERANCE UNLESS OTHERWISE SPECIFIED. WE DO NOT RECOMMEND DRILLING OR CUTTING ANY HOLES BEFORE RECEIVING A PRODUCT OR A PRODUCT SAMPLE.

3



Align the CH70 to the pilot holes or drywall anchors. Secure with (2) 1-1/2" No. 6 wood screws. Make sure the mounting bracket is fully level on the work surface.