







PGRP4B/SET

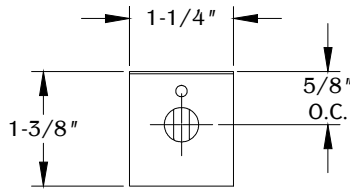
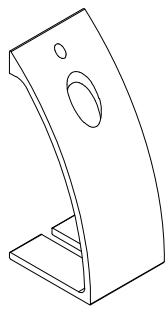
PROPRIETARY AND CONFIDENTIAL.
ALL DIMENSIONS HAVE A +/- 1/32" TOLERANCE UNLESS OTHERWISE SPECIFIED. WE DO NOT RECOMMEND DRILLING OR CUTTING ANY HOLES BEFORE RECEIVING A PRODUCT OR A PRODUCT SAMPLE.

SPECIFICATIONS

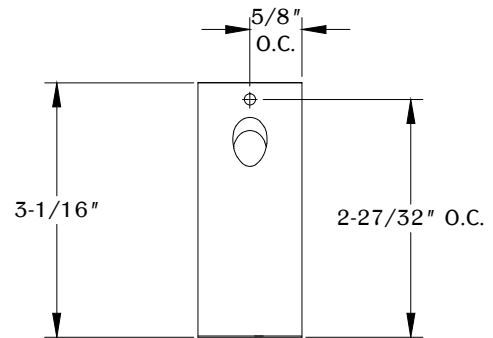
- Maximum panel height is 18".
- For light duty use only.

TABLE OF CONTENTS

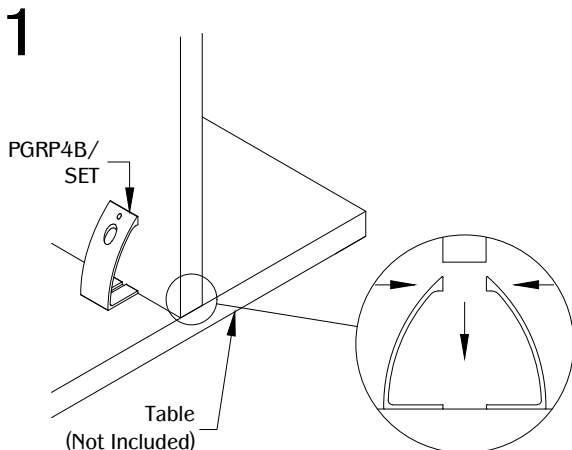
 2X PGRP4B/SET
 2X 5/32" 6-32 Nylon-Tip Set Screw
 1X 1/2" 6-32 Set Screw
 1X 3/4" 6-32 Set Screw
 1X 7/8" 6-32 Set Screw
 1X Hex Key



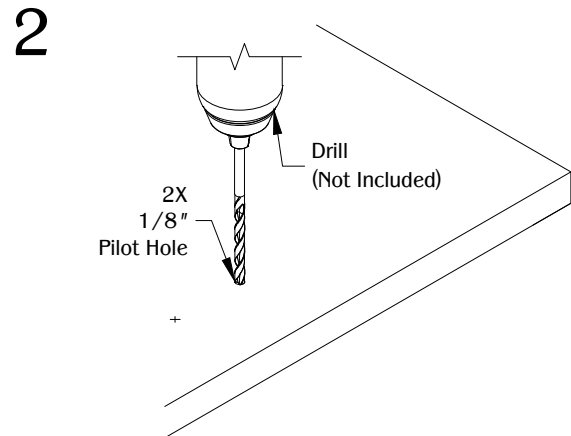
TOP VIEW



FRONT VIEW



Determine the position and location of the part on the work surface. Mark the mounting positions.

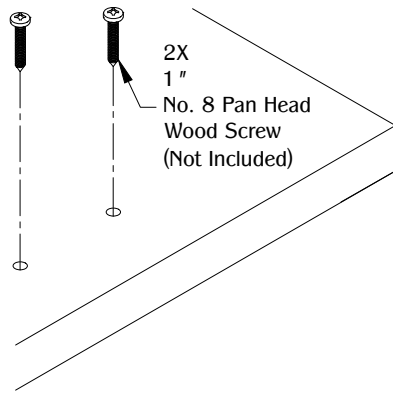


Drill (2) 1/8" pilot hole for the mounting hardware. (Note: Use appropriate pilot hole diameter and depth depending on hardware and thickness of work surface.)

PGRP4B/SET

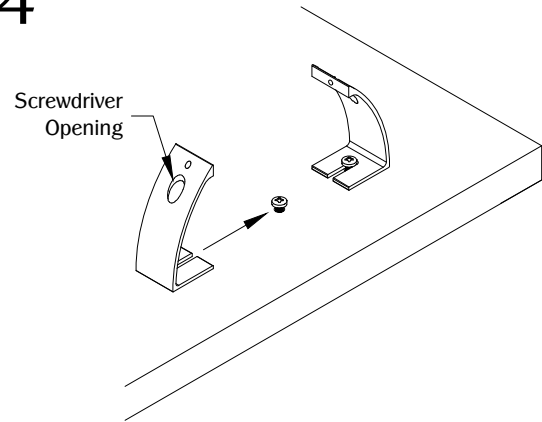
PROPRIETARY AND CONFIDENTIAL.
ALL DIMENSIONS HAVE A +/- 1/32" TOLERANCE UNLESS OTHERWISE SPECIFIED. WE DO NOT RECOMMEND DRILLING OR CUTTING ANY HOLES BEFORE RECEIVING A PRODUCT OR A PRODUCT SAMPLE.

3



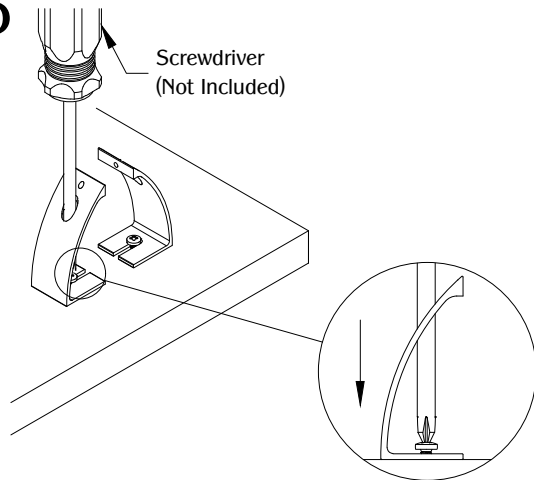
Align (2) 1" No. 8 pan head wood screws to the pilot holes. (Note: Use appropriate mounting hardware type and length depending on the material and thickness of the surface.)

4



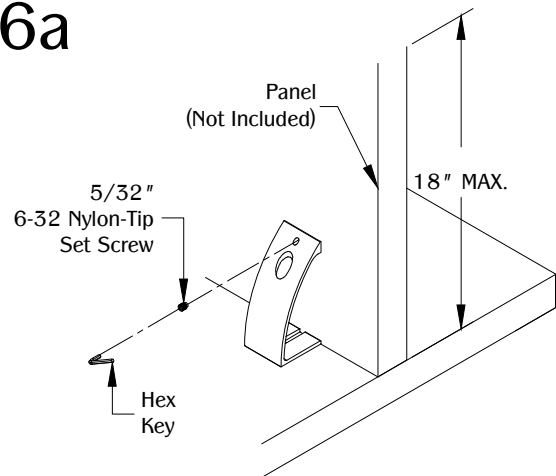
Install PGRP4B/SET by aligning screwdriver opening to mounting hardware.

5



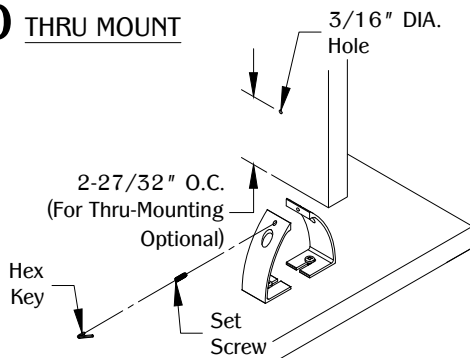
Secure part by tightening the (2) No. 8 pan head wood screws.

6a



Align panel to PGRP4B/SET and secure panel by installing the 5/32" 6-32" nylon-tip set screw. Tighten 5/32" 6-32" nylon-tip set screw with hex key.

6b THRU MOUNT



Drill a 3/16" diameter hole at 2-27/32" on center from the bottom of the panel material. Install and align pre-drilled panel hole to the panel bracket. Use the 1/2" 6-32 set screw for panels 1/8" - 3/16", 3/4" 6-32 for panels 1/4" - 3/8" and 7/8" 6-32 for panels 3/8" to 1/2". Tighten with hex key.