

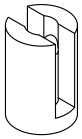
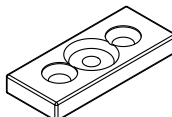


## PGRP3/F

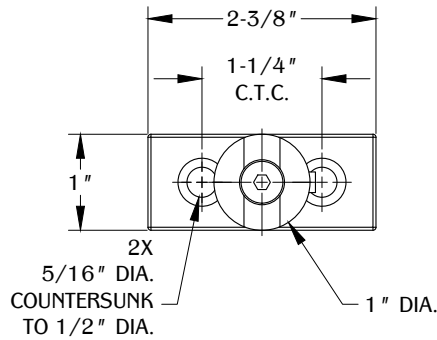
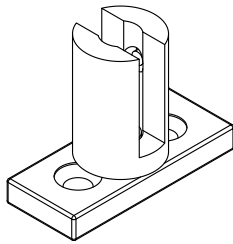
PROPRIETARY AND CONFIDENTIAL.  
ALL DIMENSIONS HAVE A +/- 1/16" TOLERANCE UNLESS OTHERWISE SPECIFIED. WE DO NOT RECOMMEND DRILLING OR CUTTING ANY HOLES BEFORE RECEIVING A PRODUCT OR A PRODUCT SAMPLE.

### SPECIFICATIONS

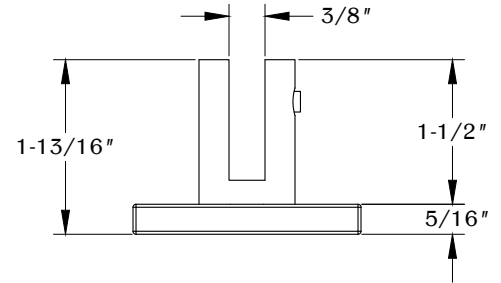
- Panel thickness is 3/8" MAX.
- Panel height is 18" MAX.

### TABLE OF CONTENTS

	..... 2X PGRP3/F Grip
	..... 2X PGRP3/F Base
	..... 2X 1/4" -20 Thread Nylon Tip Set Screw
	..... 2X 5/16" -18 Thread Hex Screw

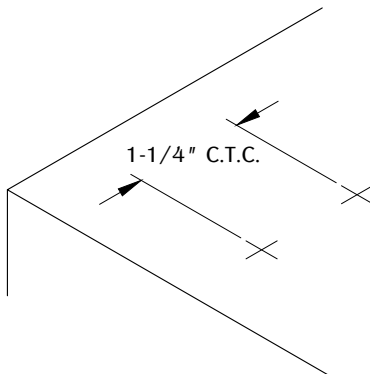


TOP VIEW



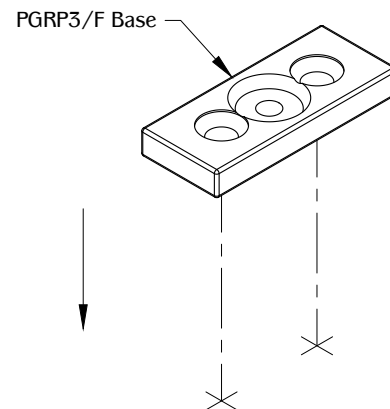
FRONT VIEW

1



Determine the position and location of the part on the work surface. Mark the mounting positions for the mounting hardware.

2



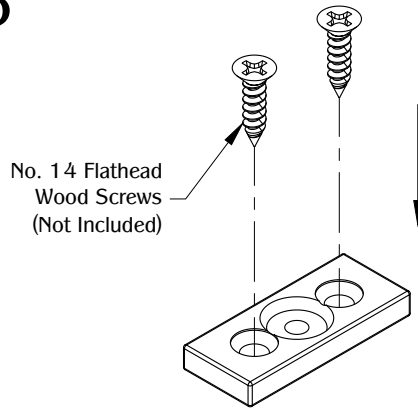
Align the PGRP3/F base to the marked mounting position.

## PGRP3/F

PROPRIETARY AND CONFIDENTIAL.

ALL DIMENSIONS HAVE A +/- 1/16" TOLERANCE UNLESS OTHERWISE SPECIFIED. WE DO NOT RECOMMEND DRILLING OR CUTTING ANY HOLES BEFORE RECEIVING A PRODUCT OR A PRODUCT SAMPLE.

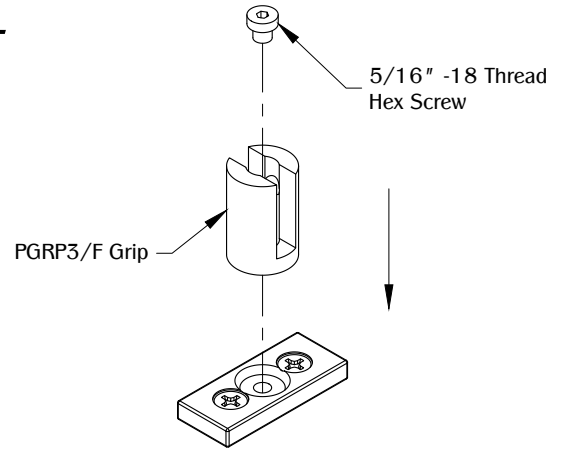
### 3



No. 14 Flathead  
Wood Screws  
(Not Included)

Secure the PGRP3/F base with (2) No. 14 flathead wood screws. (Note: Use appropriate screws and screw length depending on the table type and thickness.)

### 4

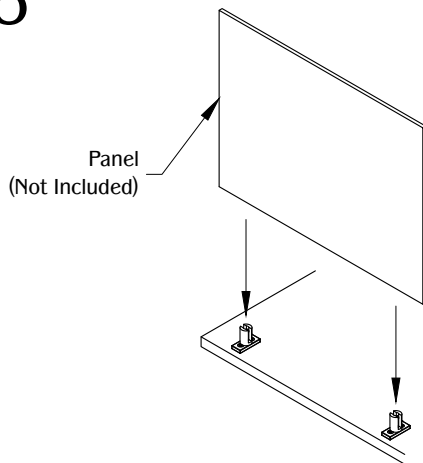


5/16" -18 Thread  
Hex Screw

PGRP3/F Grip

Install the PGRP3/F Grip into the PGRP3/F Base. Secure with 5/16" -18 thread hex screw. (Note: Repeat Step 1 to Step 4 as needed.)

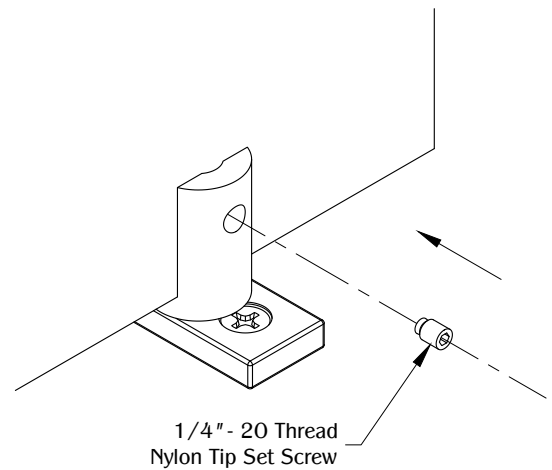
### 5



Panel  
(Not Included)

Install the desired panel into the PGRP3/F grip.

### 6



1/4" - 20 Thread  
Nylon Tip Set Screw

Secure the panel by using the 1/4" - 20 thread nylon tip set screw. (Note: Repeat as needed.)